

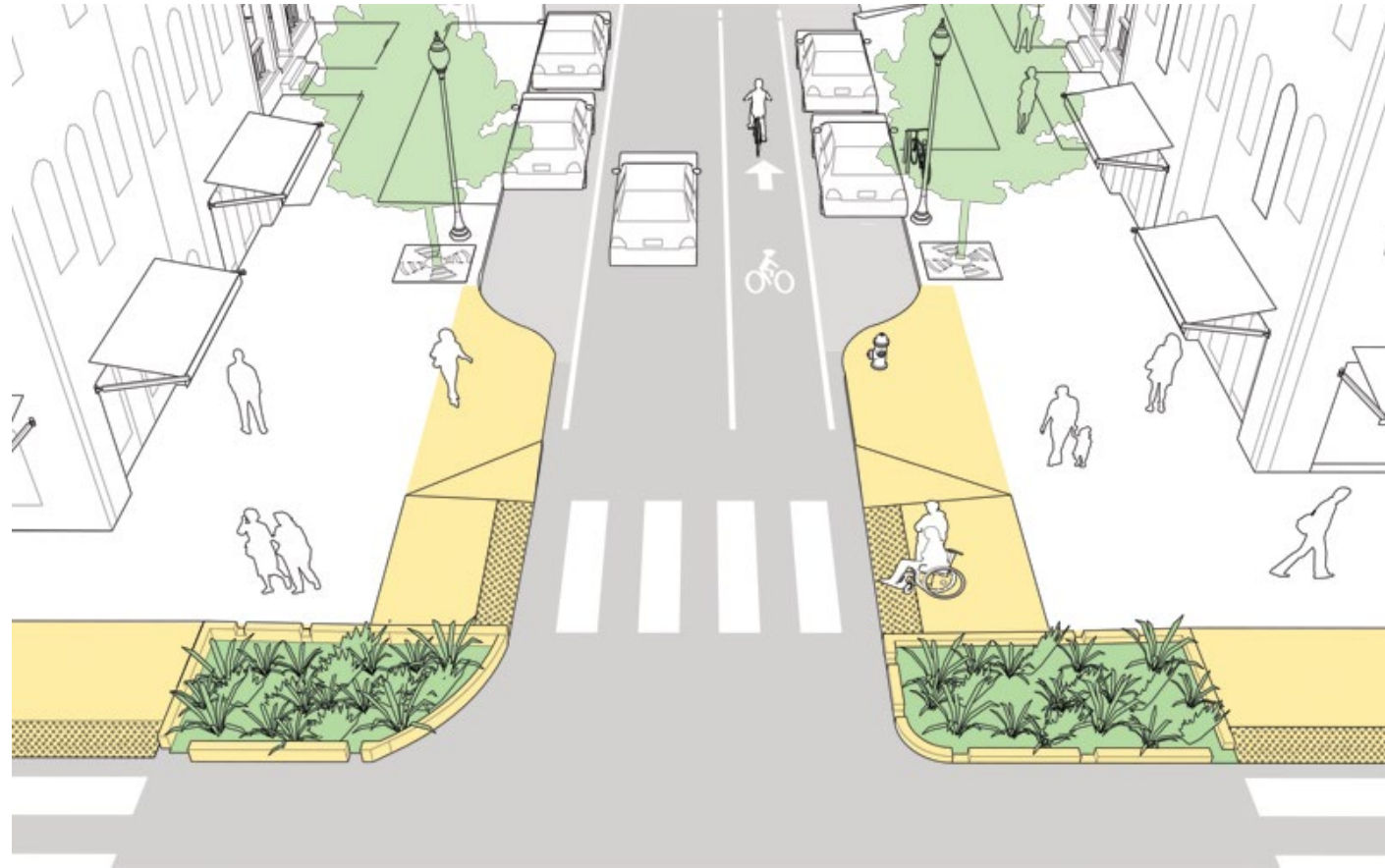
# TULARE & FOOTHILL INTERSECTION TREATMENT OPTIONS FOR PEDESTRIAN SAFETY

6/13/2023

Soo Ho Park, P.E., T.E.



Source: Nearmap; June 12, 2022



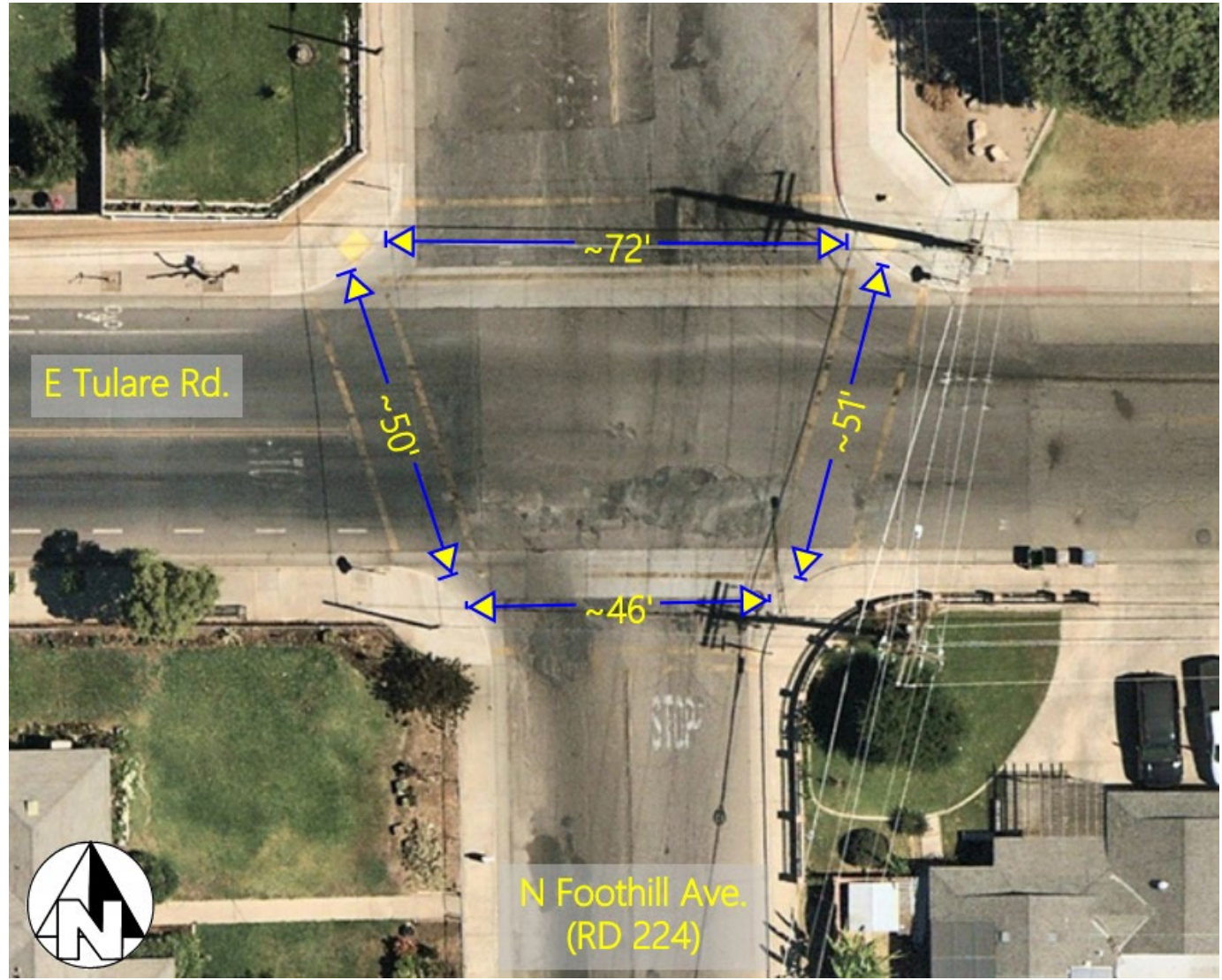
# AGENDA

- Existing Conditions
- Intersection Treatment Options
- Proposed Recommendation
- Q&A

Source: NACTO, Urban Streets Design Guide

# EXISTING CONDITIONS


- Crosswalk distances vary from 46' to 72'
- AWSC – All Way Stop Controlled
- Controlling Design Vehicle – 40' School Bus
- Drainage flows from East to West



# INTERSECTION TREATMENT OPTIONS (PEDESTRIAN ORIENTED)

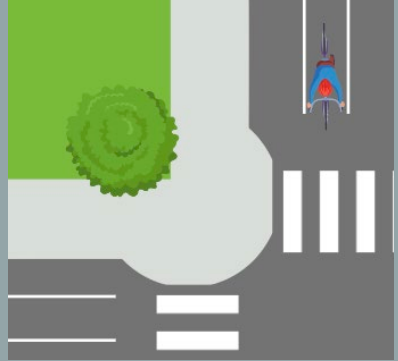
### HIGH VISIBILITY CROSSWALK STRIPING

Improve crossing visibility




### CURB EXTENSIONS (BULB OUT)

Shorten the crossing distance




### RAISED INTERSECTION DESIGN (TABLETOP)

Increase ped visibility and reduce vehicle speeds




### SIGNALIZED INTERSECTION

Provide a signalized pedestrian crossing phase.

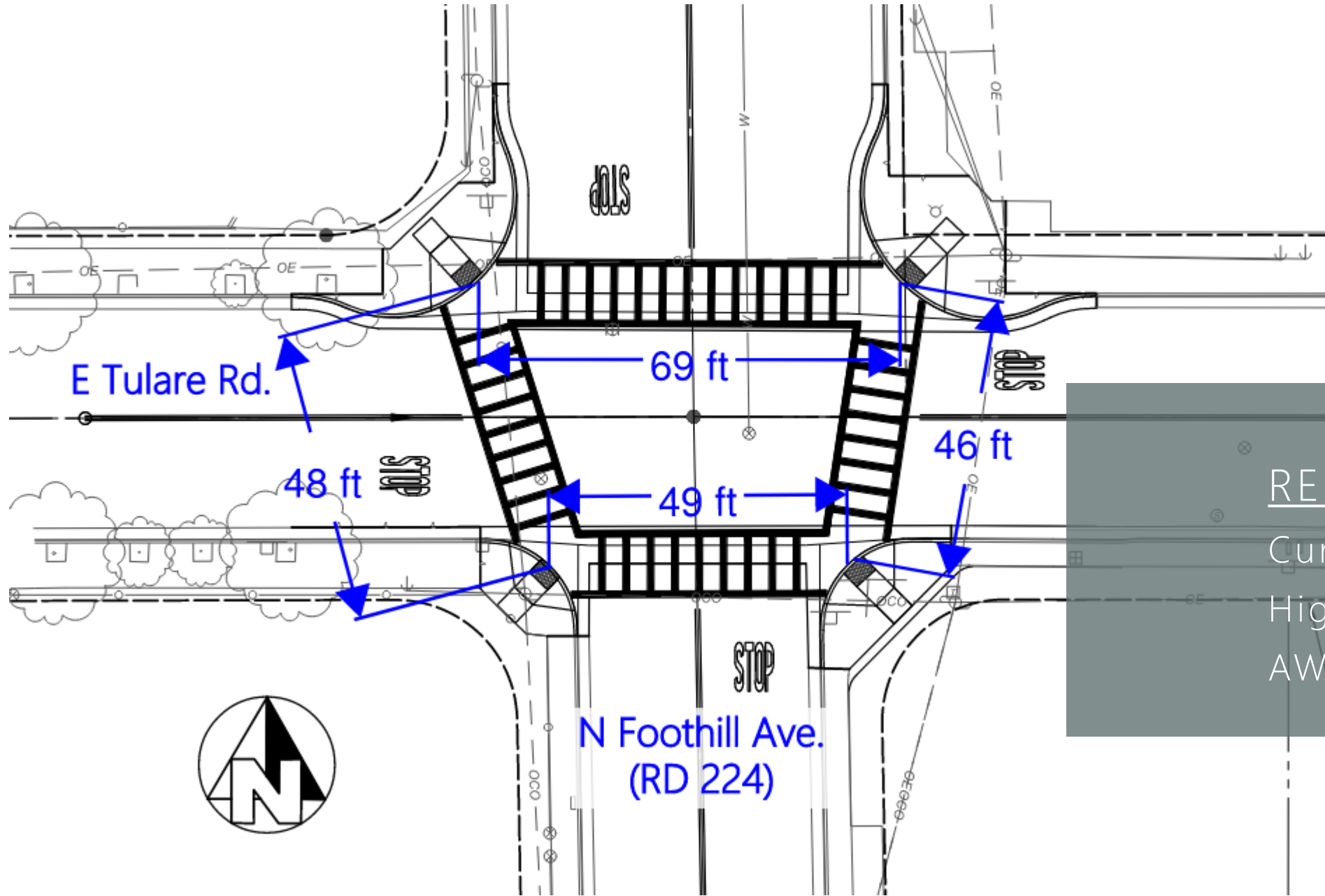


### PEDESTRIAN SCRAMBLE

Establish a diagonal pedestrian crossing at the intersection



Source: Roadmaxproducts.com; City of Carlsbad; NACTO, Urban Streets Design Guide; Maricopa Associate of Governments; Google Maps



RECOMMENDATION  
Curb Extension  
High Visibility Crosswalk  
AWSC to remain