

First Reading Of Ordinance No. 614; Amending Titles 18 and 5 of Lindsay Municipal Code

Adopting a Cannabis Combined Zoning District,
Allowing Cannabis Retail Within Newly Created
Boundaries in the Downtown Area

Current Zoning Regulations for Cannabis as per LMC

CC (Central Commercial)

- Consumption, retail, cultivation (shall not exceed 20% of the gross leasable area)

IL (Light Industrial)

- Testing, Cultivation (indoor only), distribution, manufacturing, transportation, production

IH (Heavy Industrial)

- Distribution, nursery, manufacture, production, products testing, cultivation, commercial cannabis business (excluding retail sales)

PO (Professional Offices)

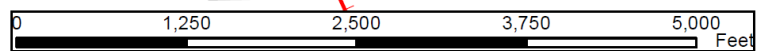
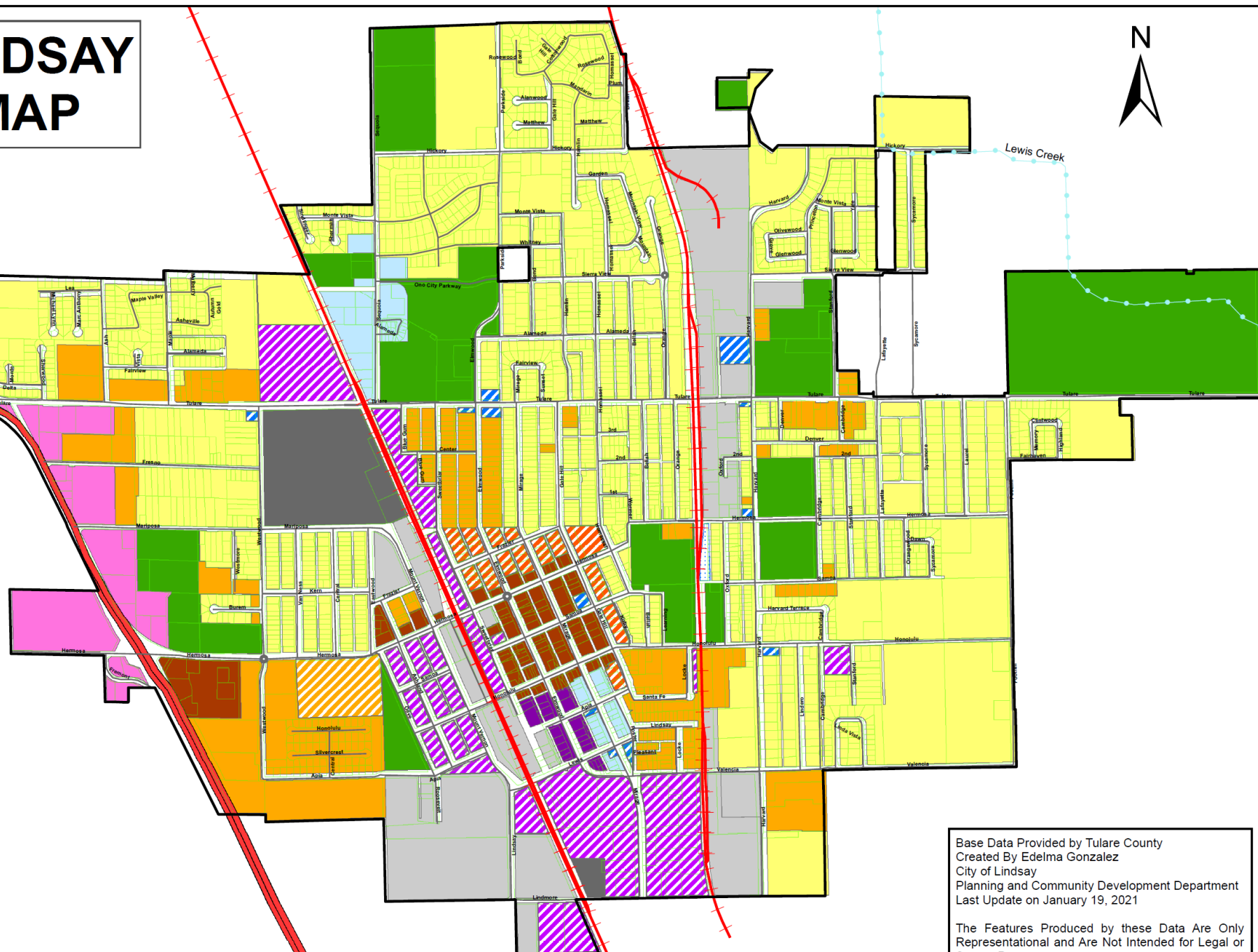
- Testing

CITY OF LINDSAY ZONING MAP



Legend

- City Limits
- City Parcel Addresses
- City Streets
- State Highway
- Railroad
- (CC) Central Commercial
- (CH) Highway Commercial
- (CN) Neighborhood Commercial
- (CS) Service Commercial
- (IH) Heavy Industrial
- (IL) Light Industrial
- (MXU) Mixed-Use
- (PO) Professional Offices
- (R-1-7) Single Family Residential
- (RCO) Resource, Conserv. & Open Space
- (RM-1.5) Office/High Density
- (RM-3) Multi-Family Residential
- (RM-MH8) Multi-Family Residential
- Unknown
- Cannabis Retail



Base Data Provided by Tulare County
 Created By Edelma Gonzalez
 City of Lindsay
 Planning and Community Development Department
 Last Update on January 19, 2021

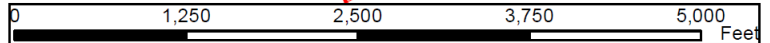
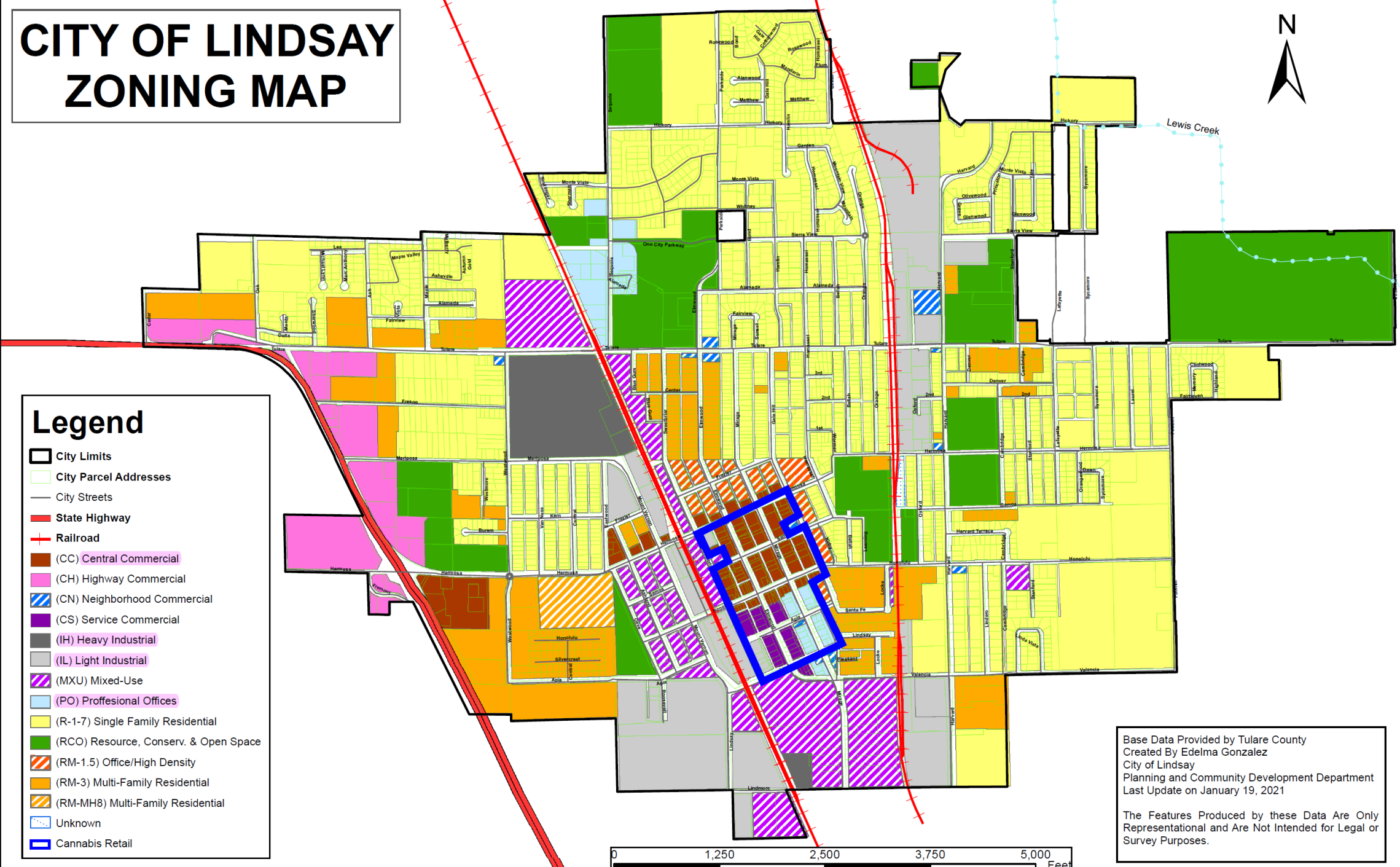
The Features Produced by these Data Are Only
 Representational and Are Not Intended for Legal or
 Survey Purposes.

CITY OF LINDSAY ZONING MAP



Legend

- City Limits
- City Parcel Addresses
- City Streets
- State Highway
- Railroad
- (CC) Central Commercial
- (CH) Highway Commercial
- (CN) Neighborhood Commercial
- (CS) Service Commercial
- (IH) Heavy Industrial
- (IL) Light Industrial
- (MXU) Mixed-Use
- (PO) Professional Offices
- (R-1-7) Single Family Residential
- (RCO) Resource, Conserv. & Open Space
- (RM-1.5) Office/High Density
- (RM-3) Multi-Family Residential
- (RM-MH8) Multi-Family Residential
- Unknown
- Cannabis Retail

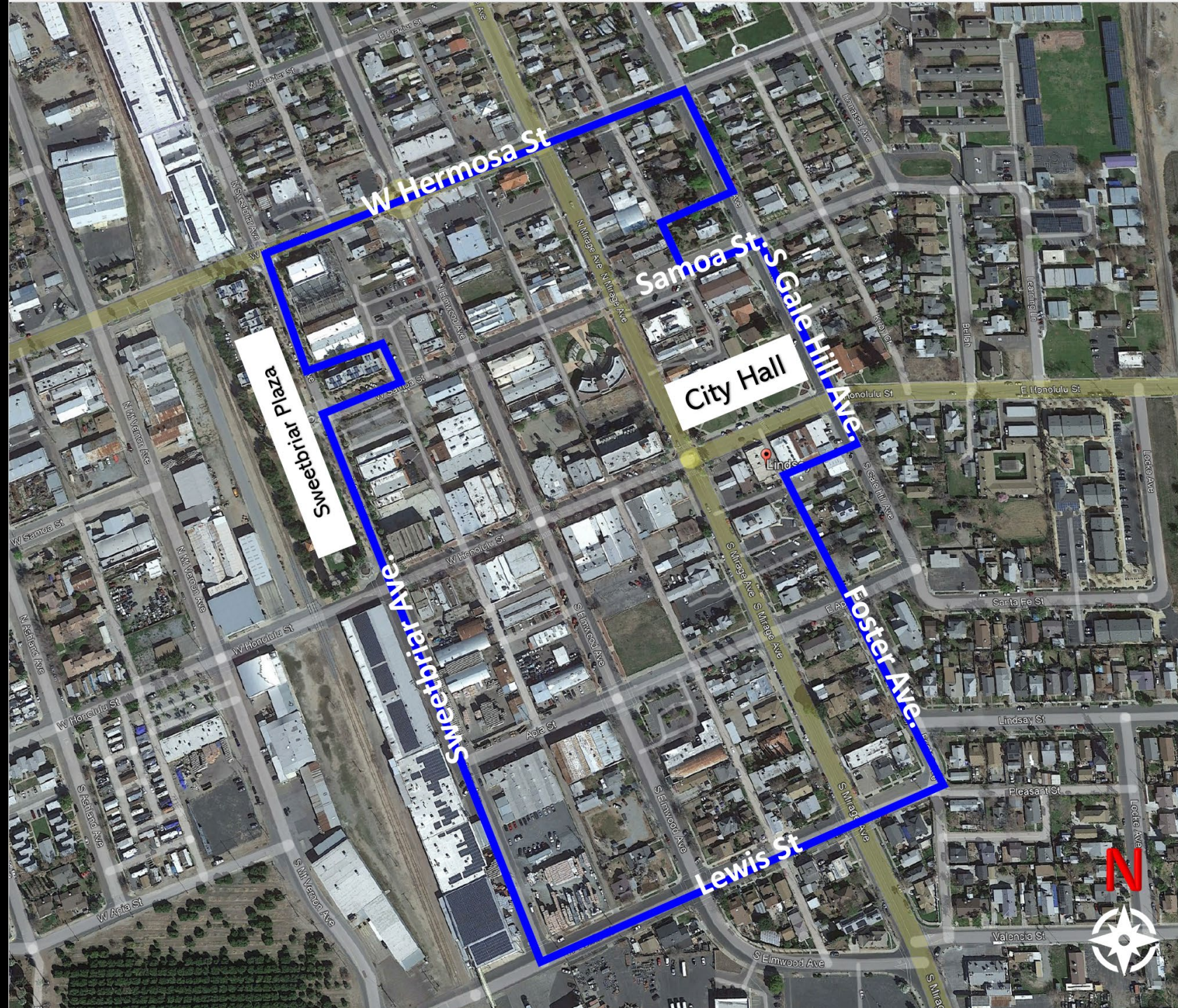


Base Data Provided by Tulare County
 Created By Edelma Gonzalez
 City of Lindsay
 Planning and Community Development Department
 Last Update on January 19, 2021

The Features Produced by these Data Are Only
 Representational and Are Not Intended for Legal or
 Survey Purposes.

Purpose

- To provide clear regulations to where retail cannabis business are permitted within the City
- Protection of public health, safety, and welfare



Proposed regulations

- Create a new combined district: *Retail Cannabis Dispensary (CAD)* combining district
- Creating clear boundaries to where commercial cannabis businesses and cannabis dispensary operations are allowed
- All businesses must comply with regulations instated in the California Business and Professions Code (19300.5) along with any amendments
- All proposed cannabis business within newly created boundaries must still apply for a conditional use permit



Questions