

City of Lindsay, CA

User Fee Study





TABLE OF CONTENTS

TABLE OF CONTENTS	i
Executive Summary	1
User Fee Background	2
Background	2
California User Fee History	2
Additional Policy Considerations	3
Study Objective	4
Scope of the Study	4
Aim of the Report.....	5
Project Approach and Methodology	6
Conceptual Approach.....	6
Fully Burdened Hourly Rates.....	6
Summary Steps of the Study.....	7
Allowable Costs.....	7
Methodology.....	8
Quality Control/Quality Assurance	8
Reasons for cost increases/decreases over current fees.....	9
City Staff Contributions.....	9
Lindsay User Fees	10
Cost Recovery.....	10
Subsidization	10
Impact on Demand (Elasticity)	11
Summary	11
Admin – Finance	12
Analysis	12
Building	13
Analysis	13
Planning	13
Analysis	14
Public Safety	15



Analysis	15
Recreation – Wellness and Aquatic Center	16
Analysis	16
Appendix A – Total Allowable Cost to be Recovered	17
Appendix B – Fully Burdened Hourly Rates	18
Appendix C – Cost Recovery Analysis	21



Executive Summary

The City of Lindsay engaged Willdan Financial Services (Willdan) to determine the full costs incurred by the City to support the various activities for which the City charges user fees. Due to the complexity and the breadth of performing a comprehensive review of fees, Willdan employed three methodologies to identify the full costs of individual fee and program activities. This report and the appendices herein identify reasonable full cost recovery for City services.

The recommended fees identified herein are either at or less than full cost recovery as determined through discussion with departmental staff.



User Fee Background

Background

Local governments adopt user fees to fund programs and services that provide a direct benefit to an individual or a group of individuals. Specifically, user fees may be adopted by local government agencies to fund programs and services that provide only a limited benefit or no direct benefit to the community as a whole. As cities struggle to maintain levels of service cities have implemented cost-recovery targets to continue to provide programs and services that have a limited impact to the community at large.

Unlike most revenue sources, cities have more control over the level of user fees they charge to recover costs, or the subsidies they institute. To the extent that governments use general tax monies to provide individuals with private benefits and not require them to pay the full cost of the service (and, therefore, receive a subsidy), the government is limiting funds that may otherwise be available to provide other community-wide benefits. In effect, the local government can decide to use community funds to pay for private benefits to certain individuals by electing to recover less than the full cost to provide these programs and services.

Fees in California are required to conform to the statutory requirements of the California Constitution, Proposition 218, Proposition 26, and the California Code of Regulations. The Code also requires that the City Council adopt fees by either ordinance or resolution, and that any fees in excess of the estimated total cost of rendering the related services must be approved by a popular vote of two-thirds of those electors voting because the charge would be considered a tax and not a fee. The recommended fees identified herein are either at or less than full cost recovery.

California User Fee History

Proposition 13 (1978) established the era of revenue limitation in California local government. In subsequent years, the state saw a series of additional limitations to local government revenues. Proposition 4 (1979) defined the difference between a tax and a fee: a fee can be no greater than the cost of providing the service; and Proposition 218 (1996) further limited the imposition of taxes for certain classes of fees. As a result, cities were required to secure a supermajority vote in order to enact or increase taxes. Compounding this limitation, the State of California took a series of actions in the 1990's and 2000's to improve the State's fiscal situation—at the expense of local governments. As an example, in 2004-05, the Educational Revenue Augmentation Funds (“ERAF”) take-away of property taxes and the reduction of Vehicle License Fees have severely reduced local tax revenues.

In addition, on November 2, 2010, California voters approved Proposition 26, the “Stop Hidden Taxes Initiative”, which is aimed at defining “regulatory fees” as a special tax rather than a fee, thus requiring approval by two-thirds vote of local voters. These regulatory fees are typically intended to mitigate the societal and environmental impacts of a business or person's activities. Proposition 26 contains seven categories of exceptions. The vast majority of fees that cities would seek to adopt as part of a user fee study will most likely fall into one or more of these exemptions.



The historical trend toward revenue limitation for local governments has raised the need for cities to reduce potential subsidies provided by the General Fund and focus on recovering the cost of those programs and services providing primarily providing a limited private benefit to certain individuals from the individual fee payers benefiting from those programs and services.

Additional Policy Considerations

The recent trend for municipalities is to update their fee schedules to reflect the actual costs of certain public services primarily benefitting the users of those services. User Fees recover costs associated with the provision of specific services benefiting the user, thereby reducing the use of General Fund monies for such purposes.

In addition to collecting the direct cost of labor and materials associated with processing and administering user services, it is common for local governments to recover reasonable support costs. Support costs are those costs relating to a local government's central service departments that are properly allocable to the local government's operating departments. Central service support costs were incorporated using the resulting indirect overhead percentages determined through the Cost Allocation Plan. This plan was developed prior to the User Fee study to determine the burden placed upon central services by the operating departments in order to allocate a proportionate share of central service cost.

As labor effort and costs associated with the provision of services fluctuate over time, a significant element in the development of any fee schedule is that it has the flexibility to remain current. Therefore, it is recommended that the City include an inflationary factor in the resolution adopting the fee schedule to allow the City Council, by resolution, to annually increase or decrease the fees in instances where a fully updated comprehensive user fee study cannot be completed.

The City may employ many different inflationary factors. The most commonly used inflator is some form of the Consumer Price Index (CPI) as it is widely well known and accepted. A similar inflator is the implicit price deflator for GDP, which is much like the CPI except that while the CPI is based on the same "basket" of goods and services every year, the price deflators' "basket" can change year to year. Since the primary factor for the cost of a City's services is usually the costs of the personnel involved, tying an inflationary factor that connects more directly to the personnel costs can be suitable if there is a clear method, or current practice of obtaining said factor.

Each City should use an inflator that they believe works the best for their specific situation and needs. It is also recommended that the City perform this internal review annually with a comprehensive review of services and fees performed every three to five years, which would include adding or removing fees for any new or eliminated programs/services.



Study Objective

As the City of Lindsay seeks to efficiently manage limited resources and adequately respond to increased service demands, it needs a variety of tools. These tools provide assurance that the City has the best information and the best resources available to make sound decisions, fairly and legitimately set fees, maintain compliance with state law and local policies, and meet the needs of the City administration and its constituency. Given the limitations on raising revenue in local government, the City recognizes that a User Fee Study is a very cost-effective way to understand the total cost of services and identify potential fee deficiencies. Essentially, a User Fee is a payment for a requested service provided by a local government that primarily benefits an individual or group.

The total cost of each service included in this analysis is based on the full cost of providing City services, including direct salaries and benefits of City staff, direct departmental costs, and indirect costs from central service support department. This study determines the full cost recovery fee for the City to provide each service; however, each fee is set at the City's discretion, up to 100% of the total cost, as specified in this report.

The principal goal of the study was to help the City determine the full cost of the services that the City provides. In addition, Willdan established a series of additional objectives including:

- Developing a rational basis for setting fees
- Identifying subsidy amount, if applicable, of each fee in the model
- Ensuring compliance with State law
- Developing an updatable and comprehensive list of fees
- Maintaining accordance with City policies and goals

The study results will help the City better understand its true costs of providing services and may serve as a basis for making informed policy decisions regarding the most appropriate fees, if any, to collect from individuals and organizations that require individualized services from the City.

Scope of the Study

The scope of this study encompasses a review and calculation of the user fees charged by the following Lindsay departments and fee groups:

- Finance & Administration
- Building
- Planning
- Public Safety
- Recreation – Wellness and Aquatic Center



The study involved the identification of existing and potential new fees, fee schedule restructuring, data collection and analysis, orientation and consultation, quality control, communication and presentations, and calculation of individual service costs (fees) or program cost recovery levels.

Aim of the Report

The User Fee Study focused on the cost of City services, as City staff currently provides them at existing, known, or reasonably anticipated service and staff levels. This report provides a summary of the study results, and a general description of the approach and methods Willdan and City staff used to determine the recommended fee schedule.



Project Approach and Methodology

Conceptual Approach

The basic concept of a User Fee Study is to determine the “reasonable cost” of each service provided by the City for which it charges a user fee. The full cost of providing a service may not necessarily become the City’s fee, but it serves as the objective basis as to the maximum amount that may be collected.

The standard fee limitation established in California law for property-related (non-discretionary) fees is the “estimated, reasonable cost” principle. In order to maintain compliance with the letter and spirit of this standard, every component of the fee study process included a related review. The use of budget figures, time estimates, and improvement valuation indicates reliance upon estimates for some data.

Fully Burdened Hourly Rates

The total cost of each service included in this analysis is primarily based on the Fully Burdened Hourly Rates (FBHRs) that were determined for City personnel directly involved in providing services. The FBHRs include not only personnel salary and benefits, but also any costs that are reasonably ascribable to personnel. The cost elements that are included in the calculation of fully burdened rates are:

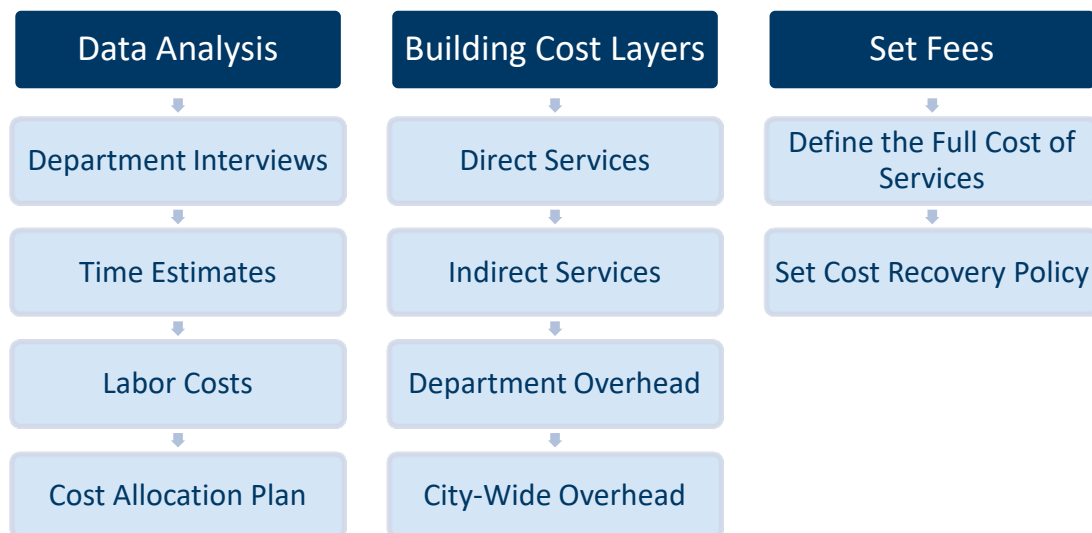
- Salaries & benefits of personnel involved
- Operating costs applicable to fee operations
- Departmental support, supervision, and administration overhead
- Internal Service Costs charged to each department
- Indirect City-wide overhead costs calculated through the Cost Allocation Plan

An important factor in determining the fully burdened rate is in the calculation of productive hours for personnel. This calculation takes the available workable hours in a year of 2,080 and adjusts this figure to account for calculated or anticipated hours’ employees are involved in non-billable activities such as paid vacation, sick leave, emergency leave, holidays, and other considerations as necessary. Dividing the full cost by the number of productive hours provides the FBHR.

The FBHRs are then used in conjunction with time estimates, when appropriate, to calculate a fees' cost based on the personnel and the amount of their time that is involved in providing each service.

Summary Steps of the Study

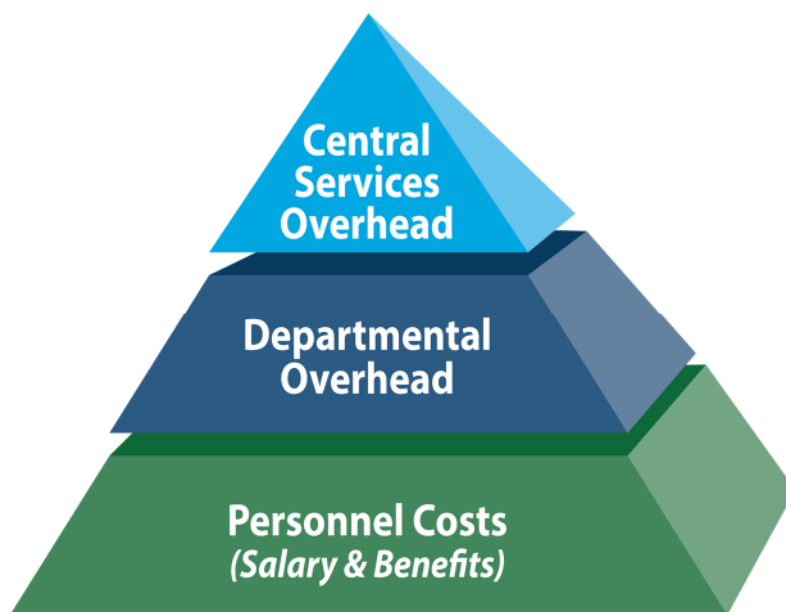
The methodology to evaluate most User Fee levels is straightforward and simple in concept. The following list provides a summary of the study process steps:



Allowable Costs

This report identifies three types of costs that, when combined, constitute the fully burdened cost of a service (**Appendix A**). Costs are defined as direct labor, including salary and benefits, departmental overhead costs, and the City’s central services overhead, where departmental and central service overhead costs constitute support costs. These cost types are defined as follows:

- **Direct Labor (Personnel Costs):** The costs related to staff salaries for time spent directly on fee-related services.
- **Departmental Overhead:** A proportional allocation of departmental overhead costs, including operation costs such as supplies and materials that are necessary for the department to function.
- **Central Services Overhead:** These costs, detailed in the City’s Cost Allocation Plan, represent services provided by those Central Services Departments whose primary function is to support other City departments.





Methodology

The three methods of analysis for calculating fees used in this report are the:

Case Study Method (Standard Unit Cost Build-Up Approach): This approach estimates the actual labor and material costs associated with providing a unit of service to a single user. This analysis is suitable when City staff time requirements do not vary dramatically for a service, or for special projects where the time and cost requirements are easy to identify at the project's outset. Further, the method is effective in instances when a staff member from one department assists on an application, service or permit for another department on an as-needed basis. Costs are estimated based upon interviews with City staff regarding the time typically spent on tasks, a review of available records, and a time and materials analysis.

Programmatic Approach: In some instances, the underlying data is not available or varies widely, leaving a standard unit cost build-up approach impractical. In addition, market factors and policy concerns (as opposed to actual costs) tend to influence fee levels more than other types of services. Willdan employed a different methodology where appropriate to fit the programs' needs and goals. Typical programmatic approach cases are facility use fees, penalties, and instances where a program cost is divided over the user base to obtain a per applicant cost for shared cost services.

Valuation Based Fees: This manner of collection is used when the valuation of the improvement can be used as a proxy for the amount of effort it would take for City staff to complete the service provided. More specifically, this approach is commonly used for certain User Fees in the Building Division. It is generally accepted that as a project's size scales up, the cost of the project increases, and the amount of effort needed to review and inspect also increases. Using a valuation-based fee provides for a system that can adjust as project sizes scale. Land is not included in the valuation.

Quality Control/Quality Assurance

All study components are interrelated, thus flawed data at any step in the process will cause the ultimate results to be inconsistent and unsound. The elements of our Quality Control process for User Fee calculations include:

- Involvement of knowledgeable City staff
- Clear instructions and guidance to City staff
- Reasonableness tests and validation
- Normalcy/expectation ranges
- FTE balancing
- Internal and external reviews
- Cross-checking



Reasons for cost increases/decreases over current fees

Within the fee tables in **Appendix C**, the differences identified between the full costs calculated through the study and the fee levels currently in effect. The reasons for differences between the two can arise from a number of possible factors including:

- Previous fee levels may have been set at levels less than full cost intentionally, based on policy decisions
- Staffing levels and the positions that complete fee and service activity may vary from when the previous costs were calculated
- Personnel and materials costs could have increased at levels that differed from any inflationary factors used to increase fees since the last study
- Costs that this study has identified as part of the full cost of services may not have been accounted for in a previous study
 - Departmental overhead and administration costs
 - Indirect overhead from the Cost Allocation Plan
- Changes in processes and procedures within a department, or the City as a whole

City Staff Contributions

As part of the study process, Willdan received tremendous support and cooperation from City staff, which contributed and reviewed a variety of components to the study, including:

- Budget and other cost data
- Staffing structures
- Fee and service structures, organization, and descriptions
- Direct and indirect work hours (billable/non-billable)
- Time estimates to complete work tasks
- Frequency and current fee levels
- Review of draft results and other documentation

A User Fee Study requires significant involvement of the managers and line staff from the departments—on top of their existing workloads and competing priorities. The contributions from City staff were critical to this study. We would like to express our appreciation to the City and its staff for their assistance, professionalism, positive attitudes, helpful suggestions, responsiveness, and overall cooperation.



Lindsay User Fees

Cost Recovery

The cost recovery models, by department and or division fee type, are presented in detail in **Appendix C**. Full cost recovery is determined by summing the estimated amount of time each position (in increments of minutes or hours) spends to render a service. Time estimates for each service rendered were predominately determined by Willdan and City Staff through a time and materials survey conducted for each department/division fee included in the study. The resulting cost recovery amount represents the total cost of providing each service. The City's current fee being charged for each service, if applicable, is provided in this section, as well, for reference.

It is important to note that the time and materials survey used to determine the amount of time each employee spends assisting in the provision of the services listed on the fee schedule is essential in identifying the total cost of providing each service. Specifically, in providing services, a number of employees are often involved in various aspects of the process, spending anywhere from a few minutes to several hours on the service.

The principal goal of this study was to identify the cost of City services, to provide information to help the City make informed decisions regarding the actual fee levels and charges.

In setting the level of full cost recovery for each fee, one should consider whether the service solely benefits one end user or the general community. City staff assumes the responsibility to develop specific fee level recommendations to present to the City Council for their final review and ultimate approval. The City of Lindsay is under specific guidance to develop and present to Lindsay City Council a fee schedule that meets the recommendations of CA State Auditors Report 2020-805.

Subsidization

Recalling the definition of a user fee helps guide decisions regarding subsidization. The general standard is that individuals (or groups) whom receive a wholly private benefit should pay 100% of the full cost of the services. In contrast, services that are 100% public benefit should be funded entirely by the general fund's tax dollars. Many services fall into the range between these two extremes.

Further complicating the decision, opponents of fees often assert that the activities subject to the fees provide economic, cultural, "quality of life," or other community benefits that exceed the costs to the City.

It is recommended the City consider such factors during its deliberations regarding appropriate fee levels.

Of course, subsidization can be an effective public policy tool, since it can be used to reduce fees to encourage certain activities (such as compliance inspections to ensure public safety) or allow some people to be able to afford to receive services they otherwise could not at the full cost. In addition, subsidies can be an appropriate and justifiable action, such as to allow citizens to rightfully access services, without burdensome costs.



Despite the intent, it is important for the City and public to understand that subsidies must be covered by another revenue source, and in most instances by the General Fund. In such instances therefore, funds provided by the general taxpayer may potentially be used to help fund and provide private benefits to an individual or group. Also in such instances, other City services may not receive those General funds that are otherwise spent to provide such subsidies.

Impact on Demand (Elasticity)

Economic principles of elasticity suggest that increased costs for services (higher fees) will eventually curtail the demand for the services; whereas lower fees may spark an incentive to utilize the services and encourage certain actions. Either of these conditions may be a desirable effect to the City. However, the level of the fees that would cause demand changes is largely unknown. The cost of service study did not attempt to evaluate the economic or behavioral impacts of higher or lower fees; nevertheless, the City should consider the potential impacts of these issues when deciding on fee levels.

Summary

If the City's principal goal of this study were to maximize revenues from user fees, Willdan would recommend setting user fees at 100% of the full cost identified in this study. However, we understand that revenue enhancement is not the only goal of a cost of service study, and sometimes full-cost recovery is not needed, desired, or appropriate. Other City and departmental goals, City Council priorities, policy initiatives, past experience, implementation issues, and other internal and external factors may influence staff recommendations and City Council decisions. In this case, the proper identification of additional services (new or existing services) and creation of a consistent and comprehensive fee schedule was the primary objective of this study. City staff has reviewed the full costs and identified the "recommended fee levels" for consideration by City Council. The attached appendices exhibit these unit fees individually.

The preceding sections provide background for each department or division and the results of this study's analysis of their fees. For the full list of each fee's analysis, refer to **Appendix C** of this report.



Finance & Administration

The Finance department is responsible for general ledger accounting, banking and investment, debt management, governmental accounting and reporting, accounts payable and accounts receivable, and utility billing.

Analysis

Willdan individually reviewed the services associated with the Finance Department. The review also consisted of an evaluation of existing services in an effort to update the fee schedule.

The analysis of Finance services relied primarily upon a standard unit cost build-up approach, whereby we determined the reasonable cost of each fee occurrence using staff time to recover the direct cost of staff and pro-rata share of departmental costs, including indirect costs for City Central Services. Willdan then compared the calculated full cost against the current fee amount to determine, if charged, whether the current fee is recovering costs associated with the requested service. The analysis found that a few of the current fees are set below the cost of service. The suggested fee amounts being recommended are detailed in **Appendix C** with some levels of subsidy suggested to remain. As a result, there would be:

- An increase to 4 fees;
- 1 new Credit Card Convenience fee would be added, and;
- 11 fees would remain as currently set.



Building

The City Services department manages the physical condition of the community and its environment. While some of the work City Services may do is out of sight because it deals with underground infrastructure or is done at the treatment plant, much of the work is either in plain view including street repair projects and can be experienced in the daily life of City residents for example through water taste and quality.

The City Services Department is comprised of the following sub departments: maintenance, streets, parks, building, code enforcement, planning, engineering, water, wastewater, storm drain utilities, refuse services, and special districts.

Analysis

Willdan individually reviewed the services associated with Building. The review also consisted of an evaluation of existing services in an effort to update the fee schedule.

The analysis of Building Services relied primarily upon a standard unit cost build-up approach, whereby we determined the reasonable cost of each fee occurrence using staff time to recover the direct cost of staff and the pro-rata share of departmental costs, including indirect costs for City Central Services. The analysis found that the current fees are subsidizing the cost of service. It is recommended that the City set Building fees at cost recovery levels as detailed in [Appendix C](#) for each specific fee, with many fees increasing to achieve full cost recovery. As a result, there would be:

- an increase to 28 fees;
- 9 fees would decrease;
- 7 new fees would be added, including a General Plan Update fee;
- 8 fees would remain as currently set, and;
- the average estimated fee increase for Building would be at around 20% for flat fee services.

In addition to the above referenced fees listed under Building, the Building Permit fees are also provided by this Department. For the Building Permit fees, valuation is used as a proxy for measuring the amount of effort needed to provide services on a case-by-case basis. This method is an industry standard widely used by other jurisdictions to evaluate the cost of providing service. It is generally understood that the larger and more complex a project is, more time and effort that is required to provide code compliance services. Project valuation also follows that trend, and so by using a combination of either project valuation or historical revenue figures along with a multiplier or cost recovery analysis for historical and anticipated future trends, current cost recovery along with variability in charges due to project type and scale is determined. The result of the cost analysis completed for the Building Permit program found that the program is currently operating at 28% cost recovery. It is suggested that the fees be increased to raise cost recovery to 100%.



Planning

The Lindsay Department of Planning and Economic Development is involved in almost every project as it follows City Council directives in supporting businesses, city services, parks, water, wastewater and curb and gutter; creating a better business community for the City; participating in the sorting of forms required to establish business in the community; encouraging interaction between the Chamber of Commerce; and highlighting all the City can offer to businesses.

Analysis

Willdan individually reviewed the services associated with the Planning Department. The review also consisted of an evaluation of existing services in an effort to update the fee schedule.

The analysis of Planning Services relied primarily upon a standard unit cost build-up approach, whereby we determined the reasonable cost of each fee occurrence using staff time to recover the direct cost of staff and the pro-rata share of departmental costs, including indirect costs for City Central Services. The analysis found that the current fees are subsidizing the cost of most services. It is recommended that the City set Planning fees at cost recovery levels as detailed in [Appendix C](#) for each specific fee to achieve full cost recovery for services. As a result, there would be:

- an increase to 32 fees;
- 1 fee would decrease;
- 9 new fees would be added, and;
- the average estimated fee increase for existing Planning services would be at around 60%.



Public Safety

Under the roof of the Lindsay Department of Public Safety you will find three separate but well-aligned components. Public Safety encompasses full-time police and fire personnel, along with animal control services. An entity that is closely tied to all three is the records unit, falling primarily under the police umbrella. To date our law enforcement personnel still act as firefighters, in the evening and weekend hours, when dedicated fire personnel are not on duty. The duties of police include identifying and solving problems throughout the City, maintaining a proactive approach on crime and ensuring the safety and quality of life of those that live, work, or worship in the community. The City's law enforcement staff embraces a great working relationship with residents and the Lindsay Unified School District as well. The Public Safety Department prides itself on the small-town relationships established and take every effort to develop community-oriented policing networks.

Fire protection services include just that, responding to fire emergencies, along with assisting with medical aid responses. A proactive approach is also taken on weed abatement and other measures to prevent or at least minimize fire damage and maintain safety of our residents.

Animal control service responsibilities include patrolling the community for stray animals or municipal code violations related to animal control and educating animal owners. Those captured are provided with humane treatment and proper sheltering, until the owner can be located, or the animal can be adopted.

Analysis

Willdan individually reviewed the services associated with the Public Safety Department. The review also consisted of an evaluation of existing services in an effort to update the fee schedule.

The services included in Public Safety are a mixture of fines and user fees. Fines are set to deter the listed activities, and the analysis of the user fees relied primarily upon a standard unit cost build-up approach, whereby we determined the reasonable cost of each fee occurrence using staff time to recover the direct cost of staff and the pro-rata share of departmental costs, including indirect costs for City Central Services. The analysis found that the current fees are subsidizing the cost of most cost-based services. It is recommended that the City set Public Safety fees at cost recovery levels as detailed in [Appendix C](#) for each specific fee to achieve greater cost recovery. As a result, there would be:

- an increase to 10 fees;
- 2 fees would decrease, and;
- 31 fees and penalties would remain as currently set.



Recreation – Wellness and Aquatic Center

The Wellness Center offers a variety of services in the areas of aquatics, fitness, and recreation. The Wellness Center boasts a state-of-the-art eight-lane swimming pool and a sloped-entry kiddie pool area; it offers pool rental to the community and serves as the home of the Lindsay High School Swim Team as well as the Skimmers, a local competitive youth swim team. Various fitness and exercises classes are also offered, as well as a full gym with various exercise machines and a free weights area. The Wellness Center is also grateful to count Pro-PT Physical Therapy and OMNI Family Health as valued tenants providing additional health resources to the Lindsay community.

In addition to the offerings found at the Wellness Center, the Department of Recreation oversees other facilities around town such as the Olive Bowl, Harvard Park, and the Lindsay Sports Complex. Special community events include Summer Night Lights and the Annual Salute to Service Run/Walk.

Analysis

Willdan individually reviewed the services associated with the Recreation – Wellness and Aquatic Center Department. The review also consisted of an evaluation of existing services in an effort to update the fee schedule.

The analysis of most Recreation programs encompassed facility rentals and other associated recreation services. The fee for use of government owned facilities and property can be set discretionally by the City per Proposition 26 based on market or policy factors. The cost of acquisition, maintenance, repair, and upgrade to the City and subsequently the community can be offset by rental or facility use fee revenue. As such fees should be set using the knowledge of activity use for the facilities, policy desires of the City, and market factors when desirable. It is generally accepted that some Recreation programs provide a measure of public benefit to the residents and City as a whole. In addition, cities generally want to ensure that their programs and services remain affordable to the community at large, and that the programs remain competitive with surrounding jurisdictions and private businesses.

An analysis of the City's Recreation Services was done to determine the reasonable cost of each fee occurrence using direct service staff time to recover the direct cost of that staff using their full burdened hourly rates. A cost analysis was also completed for the Wellness Center which found that the program is currently operating at approximately a 70% cost recovery.

The suggested fee amounts that are being recommended are to achieve greater cost recovery and are detailed in **Appendix C**. As a result, there would be:

- An increase to 29 fees;
- A decrease to 1 fee;
- 8 new fees would be added, and;
- 6 fees would remain as currently set.



Appendix A – Total Allowable Cost to be Recovered

Below are the total allowable costs that may be recovered through User Fees; however, only a percentage of the total cost is realized as staff doesn't just work on services related to User Fees, but also works on an array of other City functions during the operational hours of the City. The amounts listed below will not reconcile to City budgets as costs that should not be included in overhead for personnel in the application of determining fully burdened hourly rates were excluded. Examples of these costs are capital, debt, monetary transfers, passthrough contract costs, and any other costs that is charged directly to the service requestor.

City of Lindsay - User Fee Overhead Rate Calculations

Department	Salaries and Benefits	Department Operational Costs	Direct Overhead %	Indirect Allocation %
101: CITY MANAGER	108,410	95,800	88%	0%
101: FINANCE	141,993	130,078	92%	0%
101: COM DEV	367,615	69,153	19%	11%
101: PUBLIC SAFETY	2,998,452	1,074,906	36%	10%
101: CITY SERVICES	345,350	145,072	42%	9%
101: STREETS	249,217	67,914	27%	11%
101: PARKS	161,891	77,351	48%	11%
400: WELLNESS CENTER	370,161	301,786	82%	10%
552: WATER	564,330	473,762	84%	9%
553: SEWER	381,726	275,218	72%	9%
554: REFUSE	234,659	58,064	25%	8%



Appendix B – Fully Burdened Hourly Rates

Below are fully burdened hourly rates of staff positions that provide for the services detailed in Appendix C. The FBHRs were used to determine the full cost of each service. They include the salary and benefit costs for each position as well as all applicable overhead amounts for each position. For positions in central service departments, such as the City Clerk and Finance, what is shown is the salary and benefit rate only, as the overhead of central service departments is recovered through the cost allocation plan. When a central service department position works on a fee or project in the purview of an operating department, the overhead rates of the operating department (shown in Appendix A) will be applied to that central service positions’ salary and benefit rate for full cost recovery. For any user fee service request that is outside the scope of the fees detailed in Appendix C, or for services for which there is no fee currently set, the City can charge up to the full cost of the FBHR for personnel involved.

City of Lindsay - User Fee Fully Burdened Hourly Rate Calculation

Department	Position	Fully Burdened Hourly Rate
Blended Rates		
	101: COM DEV	\$67.21
	101: PARKS	\$73.16
	101: PUBLIC SAFETY	\$90.32
	101: PUBLIC SAFETY - Off., Sgt., Lt.	\$97.89
	101: CITY SERVICES	\$87.05
	101: STREETS	\$76.24
Full Time Position Rates		
101: COM DEV	CD-Administrative Secretary	\$58.95
101: COM DEV	CD-Administrative Supervisor	\$76.36
101: COM DEV	CD-Assistant City Planner	\$55.95
101: COM DEV	CD-City Services Manager / Inspector	\$74.90
101: COM DEV	CD-Code Enforcement (PREVIOUSLY WILLDAN)	\$37.16
101: COM DEV	CD-Planning Manager	\$99.92
101: CITY MANAGER	City M-Assistant to the City Manager / City Clerk	\$95.29
101: CITY MANAGER	City M-City Manager	\$205.12
101: CITY MANAGER	City M-Executive Assistant / Deputy City Clerk	\$64.35
101: CITY SERVICES	City Serv.-Administrative Secretary	\$69.41
101: CITY SERVICES	City Serv.-Administrative Supervisor	\$89.90
101: CITY SERVICES	City Serv.-Assistant to the City Manager / City Clerk	\$78.30



City of Lindsay - User Fee

Fully Burdened Hourly Rate Calculation

Department	Position	Fully Burdened Hourly Rate
Full Time Position Rates		
101: CITY SERVICES	City Serv.-City Services Assistant Director	\$96.14
101: CITY SERVICES	City Serv.-City Services Manager / Inspector	\$88.19
101: CITY SERVICES	City Serv.-Director Of City Services	\$153.26
101: CITY SERVICES	City Serv.-Engineering Tech	\$59.25
101: CITY SERVICES	City Serv.-Executive Assistant / Deputy City Clerk	\$52.88
101: CITY SERVICES	City Serv.-Human Resources Manager	\$123.29
101: CITY SERVICES	City Serv.-IT Manager	\$93.30
101: CITY SERVICES	City Serv.-Maintenance	\$45.08
101: CITY SERVICES	City Serv.-Planning Manager	\$117.64
101: CITY SERVICES	City Serv.-Senior Maintenance 1	\$45.33
101: CITY SERVICES	City Serv.-Senior Maintenance 3	\$106.71
101: FINANCE	Fin.-Account Clerk 3	\$89.32
101: FINANCE	Fin.-Administrative Supervisor	\$140.65
101: FINANCE	Fin.-Director Of Finance	\$143.38
101: PARKS	Parks-Administrative Secretary	\$73.29
101: PARKS	Parks-Administrative Supervisor	\$94.93
101: PARKS	Parks-Engineering Tech	\$62.57
101: PARKS	Parks-Maintenance	\$47.60
101: PARKS	Parks-Senior Maintenance 1	\$47.86
101: PARKS	Parks-Senior Maintenance 3	\$112.68
101: PUBLIC SAFETY	Pub. Safety-Administrative Supervisor	\$93.52
101: PUBLIC SAFETY	Pub. Safety-Animal Control Officer	\$49.00
101: PUBLIC SAFETY	Pub. Safety-Director Of Public Safety	\$153.75
101: PUBLIC SAFETY	Pub. Safety-Fire Apparatus Engineer	\$51.28
101: PUBLIC SAFETY	Pub. Safety-Fire Lieutenant	\$73.79
101: PUBLIC SAFETY	Pub. Safety-Public Safety Lieutenant	\$158.19
101: PUBLIC SAFETY	Pub. Safety-Public Safety Officer	\$75.62
101: PUBLIC SAFETY	Pub. Safety-Public Safety Officer (SRO II)	\$52.59
101: PUBLIC SAFETY	Pub. Safety-Public Safety Sergeant	\$105.16
101: STREETS	Streets-Administrative Secretary	\$63.22
101: STREETS	Streets-Administrative Supervisor	\$81.89
101: STREETS	Streets-City Services Assistant Director	\$87.57
101: STREETS	Streets-City Services Manager / Inspector	\$80.33
101: STREETS	Streets-Director Of City Services	\$139.61
101: STREETS	Streets-Engineering Tech	\$53.97
101: STREETS	Streets-Maintenance	\$41.06



City of Lindsay - User Fee

Fully Burdened Hourly Rate Calculation

Department	Position	Fully Burdened Hourly Rate
Full Time Position Rates		
101: STREETS	Streets-Senior Maintenance 1	\$41.29
101: STREETS	Streets-Senior Maintenance 3	\$97.20
263: TRANSPORTATION	Transp.-Administrative Secretary	\$49.59
263: TRANSPORTATION	Transp.-Administrative Supervisor	\$64.24
263: TRANSPORTATION	Transp.-City Services Assistant Director	\$68.69
263: TRANSPORTATION	Transp.-City Services Manager / Inspector	\$63.01
263: TRANSPORTATION	Transp.-Director Of City Services	\$109.50
263: TRANSPORTATION	Transp.-Engineering Tech	\$42.34
263: TRANSPORTATION	Transp.-Maintenance	\$42.35
263: TRANSPORTATION	Transp.-Senior Maintenance 1	\$32.39
263: TRANSPORTATION	Transp.-Senior Maintenance 3	\$76.24
400: WELLNESS CENTER	Well. Center-Administrative Secretary	\$59.86
400: WELLNESS CENTER	Well. Center-Recreation 1	\$51.74
400: WELLNESS CENTER	Well. Center-Recreation Director	\$122.31



Appendix C – Cost Recovery Analysis

The following tables provide the results of the analysis, resulting full cost recovery amount, and recommended fees. For fees in which the full cost, existing fee and suggested fee is listed as “NA”, the amount or percentage was not calculable based on cost data or variable fee structure. This is most common when either the current or the suggested fee includes a variable component that is not comparable on a one to one basis, a full cost was not calculated (for penalties and fines), or when there is not a current fee amount to compare against.

FINANCE & ADMINISTRATION FEES

#	Description	Current Fee/Charge	Notes
1	Application Fee	\$30.00	One Time Fee
2	CASP FEE	\$4.00	Renewal
3	Classification A	\$10 minimum - \$30 maximum	Gross Receipts/Quarterly
4	Classification B	\$10 minimum - \$50 maximum	Gross Receipts/Quarterly
5	Classification C	\$10 minimum - \$217 maximum	Gross Receipts/Quarterly
6	Classification D	\$10 minimum - \$124 maximum	Gross Receipts/Quarterly
7	Farmers Market	\$30.00	Annual
8	Vehicles with no fixed Location	\$15.00	Semi-Annual
9	Contractors	\$50.00	Semi-Annual
10	Sub-Contractors	\$30.00	Semi-Annual
11	ONE Day	\$7.00	Special Events
12	Department Inspection Fee		New Business, Applicant & Location requires Fire & Building inspection fee
13	Fire	\$100.00	
14	Building	\$100.00	
15	Credit Card Convenience Fee	New	
16	General Copy Fee	\$0.10	
17	Yard Sale	\$5.00	

Full Cost	Subsidy %	Suggested Fee	Fee Δ
\$73.12	0%	\$73.00	\$43
NA	NA	\$4.00	\$0
NA	NA	\$10 minimum - \$30 maximum	\$0
NA	NA	\$10 minimum - \$50 maximum	\$0
NA	NA	\$10 minimum - \$217 maximum	\$0
NA	NA	\$10 minimum - \$124 maximum	\$0
NA	NA	\$30.00	\$0
NA	NA	\$15.00	\$0
NA	NA	\$50.00	\$0
NA	NA	\$30.00	\$0
NA	NA	\$7.00	\$0
\$151.71	1%	\$150.00	\$50
\$148.43	0%	\$148.00	\$48
NA	NA	\$2.95	NA
\$0.25	60%	\$0.10	\$0
\$16.43	3%	\$16.00	\$11

BUILDING FEES

#	Description	Current Fee/Charge	Unit	Notes
1	FLAT RATES MISCELLANEOUS			
2	HVAC unit	\$435.00		
3	Building sewer	\$320.00		
4	Demolition	\$295.00		
5	Electrical Service (<200 amp)	\$295.00		
6	Evaporative cooler	\$230.00		
7	Excavation/Encroachment of Right of Way (Includes 2 inspections)	\$380.00		
8	Utility Company Annual Encroachment of Right of Way	\$1,060.00		
9	Septic tank abandonment	\$260.00		
10	Signs (No Electrical)	\$410.00		
11	Signs (Electrical)	\$535.00		
12	Above-ground swimming pool	\$535.00		
13	Temporary power service	\$310.00		
14	Tub/Shower	\$360.00		
15	Wall furnace	\$360.00		
16	Water heater	\$360.00		
17	Patio and carport	\$485.00		
18	Reroof single family residential	\$385.00		
19	Reroof multifamily/commercial (per building)	\$585.00		
20	Water Softener	New		
21	Residential window replacement	New		
22	Residential wood fence install/replacement	New		
23	Temporary Storage POD Encroachment Permit (30 Days max)	New		
24	OTHER INSPECTION FEES			
25	Special inspections (Compliance) \$105 per hour minimum 2 hour	\$210.00		
26	Re-inspection fees	\$105.00		
27	ELECTRICAL PERMIT FEES			Work without Permit 2x Permit Fees each applicable category
28	Permit fee	See Attachment A		
29	Residential Rooms w/ receptacles/outlets	New	per room	
30	Commercial Rooms w/receptables/outlets	New	per room	
31	Electric meter up to 200 amp	\$250.00		
32	Photovoltaic System			Set by Assembly Bill AB1414 & Shall remain in effect until 1-1-25)
33	Residential 1-15 Kilowatts	\$500.00	each	
34	Residential for each kilowatt above 15 kw	\$15.00	per kw	
35	Commercial 1-50 Kilowatts	\$1,000.00	each	
36	Commercial for each kilowatt between 51 kw and 250 kw	\$7.00	per kw	
37	Commercial for each kilowatt above 250 kw	\$5.00	per kw	

Full Cost	Subsidy %	Suggested Fee	Fee Δ
\$479.90	0%	\$479.00	\$44
\$349.33	0%	\$349.00	\$29
\$305.80	0%	\$305.00	\$10
\$305.80	0%	\$305.00	\$10
\$262.28	0%	\$262.00	\$32
\$392.85	0%	\$392.00	\$12
\$1,089.23	0%	\$1,089.00	\$29
\$305.80	0%	\$305.00	\$45
\$460.06	0%	\$460.00	\$50
\$590.63	0%	\$590.00	\$55
\$697.52	0%	\$697.00	\$162
\$305.80	0%	\$305.00	-\$5
\$349.33	0%	\$349.00	-\$11
\$349.33	0%	\$349.00	-\$11
\$349.33	0%	\$349.00	-\$11
\$590.63	0%	\$590.00	\$105
\$392.85	0%	\$392.00	\$7
\$610.47	0%	\$610.00	\$25
\$349.33	0%	\$349.00	NA
\$329.49	0%	\$329.00	NA
\$175.23	0%	\$175.00	NA
\$333.33	0%	\$333.00	NA
\$354.83	0%	\$354.00	\$144
\$130.57	0%	\$130.00	\$25
NA	NA	See Attachment A	NA
\$43.52	1%	\$43.00	NA
\$87.05	0%	\$87.00	NA
\$305.80	0%	\$305.00	\$55
NA	NA	\$450.00	-\$50
NA	NA	\$15.00	\$0
NA	NA	\$1,000.00	\$0
NA	NA	\$7.00	\$0
NA	NA	\$5.00	\$0

BUILDING FEES

#	Description	Current Fee/Charge	Unit	Notes
38	PLUMBING PERMIT FEES			
39	Permit fee	See Attachment A		
40	Water heater and/or vent	\$125.00		
41	Gas piping one to five outlets	\$125.00		
42	Each additional gas piping, per outlet	\$40.00		
43	Water piping	\$30.00		
44	Building sewer and each trailer park sewer	\$60.00		
45	Room w/fixtures	\$30.00		
46	Grease trap	\$125.00		
47	Landscape sprinkler system. New MWELO (<2,500 sq. ft Landscape Area)	\$250.00		
48	Landscape sprinkler system. New MWELO (>2,500 sq. ft Landscape Area)	\$500.00		
49	<u>Fire & Hood Suppression/Alarm System/Detection System</u>			
50	Residential Fire Sprinkler System	\$300.00		
51	Commercial Fire Sprinkler System	New		
52	Protection Devices			
53	Residential Backflow Preventer or Vacuum Breakers	\$175.00		
54	Commercial Backflow Preventer or Vacuum Breakers	\$285.00		
55	MECHANICAL PERMIT FEES			
56	Permit fee	See Attachment A		
57	Wall furnace/HVAC	\$125.00		
58	Fan ventilation	\$30.00		
59	Duct system	\$30.00		
60	Hood (including duct)	\$30.00		

Full Cost	Subsidy %	Suggested Fee	Fee Δ
NA	NA	See Attachment A	NA
\$131.71	1%	\$131.00	\$6
\$131.71	1%	\$131.00	\$6
\$43.52	1%	\$43.00	\$3
\$87.05	0%	\$87.00	\$57
\$43.52	1%	\$43.00	-\$17
\$43.52	1%	\$43.00	\$13
\$130.57	0%	\$130.00	\$5
\$305.80	0%	\$305.00	\$55
\$392.85	0%	\$392.00	-\$108
\$218.75	0%	\$218.00	-\$82
\$479.90	0%	\$479.00	NA
\$175.23	0%	\$175.00	\$0
\$175.23	0%	\$175.00	-\$110
NA	NA	See Attachment A	NA
\$130.57	0%	\$130.00	\$5
\$43.52	1%	\$43.00	\$13
\$43.52	1%	\$43.00	\$13
\$43.52	1%	\$43.00	\$13

Building Permit Fees - Current			
Total Valuation		Building Permit Fee	Plan Check Fee
1	500	80.00	
501	600	83.99	
601	700	87.99	
701	800	91.98	
801	900	95.97	
901	1,000	99.96	
1,001	1,100	103.96	67.57
1,101	1,200	107.95	70.16
1,201	1,300	111.94	72.76
1,301	1,400	115.93	75.35
1,401	1,500	119.93	77.94
1,501	1,600	123.92	80.54
1,601	1,700	127.91	83.13
1,701	1,800	131.90	85.72
1,801	1,900	135.90	88.32
1,901	2,000	139.89	90.91
2,001	3,000	143.88	93.50
3,001	4,000	147.87	96.09
4,001	5,000	151.87	98.69
5,001	6,000	155.86	101.28
6,001	7,000	159.85	103.87
7,001	8,000	163.84	106.47
8,001	9,000	167.84	109.06
9,001	10,000	171.83	111.65
10,001	11,000	175.82	114.25
11,001	12,000	179.81	116.84
12,001	13,000	183.81	119.43
13,001	14,000	187.80	122.03
14,001	15,000	191.79	124.62
15,001	16,000	195.78	127.21
16,001	17,000	199.78	129.80
17,001	18,000	203.77	132.40
18,001	19,000	207.76	134.99
19,001	20,000	211.75	137.58
20,001	21,000	215.75	140.18
21,001	22,000	219.74	142.77
22,001	23,000	223.73	145.36
23,001	24,000	227.72	147.96
24,001	25,000	231.72	150.55
25,001	26,000	235.71	153.14
26,001	27,000	239.70	155.74
27,001	28,000	243.69	158.33
28,001	29,000	247.69	160.92
29,001	30,000	251.68	163.51
30,001	31,000	255.67	166.11
31,001	32,000	259.66	168.70
32,001	33,000	263.66	171.29
33,001	34,000	267.65	173.89
34,001	35,000	271.64	176.48
35,001	36,000	275.63	179.07
36,001	37,000	279.63	181.67
37,001	38,000	283.62	184.26
38,001	39,000	287.61	186.85
39,001	40,000	291.60	189.45
40,001	41,000	295.60	192.04
41,001	42,000	299.59	194.63
42,001	43,000	303.58	197.22
43,001	44,000	307.57	199.82
44,001	45,000	311.57	202.41
45,001	46,000	315.56	205.00
46,001	47,000	319.55	207.60
47,001	48,000	323.54	210.19
48,001	49,000	327.54	212.78
49,001	50,000	331.53	215.38
50,001	51,000	335.52	217.97
51,001	52,000	339.51	220.56
52,001	53,000	343.51	223.16
53,001	54,000	347.50	225.75
54,001	55,000	351.49	228.34
55,001	56,000	355.48	230.93
56,001	57,000	359.48	233.53
57,001	58,000	363.47	236.12
58,001	59,000	367.46	238.71
59,001	60,000	371.45	241.31
60,001	61,000	375.45	243.90
61,001	62,000	379.44	246.49
62,001	63,000	383.43	249.09
63,001	64,000	387.42	251.68
64,001	65,000	391.42	254.27
65,001	66,000	395.41	256.87
66,001	67,000	399.40	259.46
67,001	68,000	403.39	262.05
68,001	69,000	407.39	264.64
69,001	70,000	411.38	267.24
70,001	71,000	415.37	269.83
71,001	72,000	419.36	272.42
72,001	73,000	423.36	275.02
73,001	74,000	427.35	277.61

Building Permit Fees - Suggested			
Total Valuation		Building Permit Fee	Plan Check Fee
1	500	285.77	0.00
501	600	300.03	0.00
601	700	314.29	0.00
701	800	328.56	0.00
801	900	342.82	0.00
901	1,000	357.08	0.00
1,001	1,100	371.34	241.37
1,101	1,200	385.60	250.63
1,201	1,300	399.87	259.90
1,301	1,400	414.13	269.16
1,401	1,500	428.39	278.42
1,501	1,600	442.65	287.69
1,601	1,700	456.91	296.95
1,701	1,800	471.17	306.21
1,801	1,900	485.44	315.47
1,901	2,000	499.70	324.74
2,001	3,000	513.96	334.00
3,001	4,000	528.22	343.26
4,001	5,000	542.48	352.53
5,001	6,000	556.74	361.79
6,001	7,000	571.01	371.05
7,001	8,000	585.27	380.31
8,001	9,000	599.53	389.58
9,001	10,000	613.79	398.84
10,001	11,000	628.05	408.10
11,001	12,000	642.32	417.37
12,001	13,000	656.58	426.63
13,001	14,000	670.84	435.89
14,001	15,000	685.10	445.15
15,001	16,000	699.36	454.42
16,001	17,000	713.62	463.68
17,001	18,000	727.89	472.94
18,001	19,000	742.15	482.21
19,001	20,000	756.41	491.47
20,001	21,000	770.67	500.73
21,001	22,000	784.93	509.99
22,001	23,000	799.20	519.26
23,001	24,000	813.46	528.52
24,001	25,000	827.72	537.78
25,001	26,000	841.98	547.05
26,001	27,000	856.24	556.31
27,001	28,000	870.50	565.57
28,001	29,000	884.77	574.83
29,001	30,000	899.03	584.10
30,001	31,000	913.29	593.36
31,001	32,000	927.55	602.62
32,001	33,000	941.81	611.88
33,001	34,000	956.08	621.15
34,001	35,000	970.34	630.41
35,001	36,000	984.60	639.67
36,001	37,000	998.86	648.94
37,001	38,000	1,013.12	658.20
38,001	39,000	1,027.38	667.46
39,001	40,000	1,041.65	676.72
40,001	41,000	1,055.91	685.99
41,001	42,000	1,070.17	695.25
42,001	43,000	1,084.43	704.51
43,001	44,000	1,098.69	713.78
44,001	45,000	1,112.96	723.04
45,001	46,000	1,127.22	732.30
46,001	47,000	1,141.48	741.56
47,001	48,000	1,155.74	750.83
48,001	49,000	1,170.00	760.09
49,001	50,000	1,184.26	769.35
50,001	51,000	1,198.53	778.62
51,001	52,000	1,212.79	787.88
52,001	53,000	1,227.05	797.14
53,001	54,000	1,241.31	806.40
54,001	55,000	1,255.57	815.67
55,001	56,000	1,269.84	824.93
56,001	57,000	1,284.10	834.19
57,001	58,000	1,298.36	843.46
58,001	59,000	1,312.62	852.72
59,001	60,000	1,326.88	861.98
60,001	61,000	1,341.14	871.24
61,001	62,000	1,355.41	880.51
62,001	63,000	1,369.67	889.77
63,001	64,000	1,383.93	899.03
64,001	65,000	1,398.19	908.30
65,001	66,000	1,412.45	917.56
66,001	67,000	1,426.72	926.82
67,001	68,000	1,440.98	936.08
68,001	69,000	1,455.24	945.35
69,001	70,000	1,469.50	954.61
70,001	71,000	1,483.76	963.87
71,001	72,000	1,498.02	973.14
72,001	73,000	1,512.29	982.40
73,001	74,000	1,526.55	991.66

Building Permit Fees - Current			
Total Valuation		Building Permit Fee	Plan Check Fee
74,001	75,000	431.34	280.20
75,001	76,000	435.33	282.80
76,001	77,000	439.33	285.39
77,001	78,000	443.32	287.98
78,001	79,000	447.31	290.58
79,001	80,000	451.30	293.17
80,001	81,000	455.30	295.76
81,001	82,000	459.29	298.35
82,001	83,000	463.28	300.95
83,001	84,000	467.27	303.54
84,001	85,000	471.27	306.13
85,001	86,000	475.26	308.73
86,001	87,000	479.25	311.32
87,001	88,000	483.24	313.91
88,001	89,000	487.24	316.51
89,001	90,000	491.23	319.10
90,001	91,000	495.22	321.69
91,001	92,000	499.21	324.29
92,001	93,000	503.21	326.88
93,001	94,000	507.20	329.47
94,001	95,000	511.19	332.06
95,001	96,000	515.18	334.66
96,001	97,000	519.18	337.25
97,001	98,000	523.17	339.84
98,001	99,000	527.16	342.44
99,001	100,000	531.15	345.03
100,001	101,000	535.15	347.62
101,001	102,000	539.14	350.22
102,001	103,000	543.13	352.81
103,001	104,000	547.12	355.40
104,001	105,000	551.12	358.00
105,001	106,000	555.11	360.59
106,001	107,000	559.10	363.18
107,001	108,000	563.09	365.78
108,001	109,000	567.09	368.37
109,001	110,000	571.08	370.96
110,001	111,000	575.07	373.55
111,001	112,000	579.07	376.15
112,001	113,000	583.06	378.74
113,001	114,000	587.05	381.33
114,001	115,000	591.04	383.93
115,001	116,000	595.04	386.52
116,001	117,000	599.03	389.11
117,001	118,000	603.02	391.71
118,001	119,000	607.01	394.30
119,001	120,000	611.01	396.89
120,001	121,000	615.00	399.49
121,001	122,000	618.99	402.08
122,001	123,000	622.98	404.67
123,001	124,000	626.98	407.26
124,001	125,000	630.97	409.86
125,001	126,000	634.96	412.45
126,001	127,000	638.95	415.04
127,001	128,000	642.95	417.64
128,001	129,000	646.94	420.23
129,001	130,000	650.93	422.82
130,001	131,000	654.92	425.42
131,001	132,000	658.92	428.01
132,001	133,000	662.91	430.60
133,001	134,000	666.90	433.20
134,001	135,000	670.89	435.79
135,001	136,000	674.89	438.38
136,001	137,000	678.88	440.97
137,001	138,000	682.87	443.57
138,001	139,000	686.86	446.16
139,001	140,000	690.86	448.75
140,001	141,000	694.85	451.35
141,001	142,000	698.84	453.94
142,001	143,000	702.83	456.53
143,001	144,000	706.83	459.13
144,001	145,000	710.82	461.72
145,001	146,000	714.81	464.31
146,001	147,000	718.80	466.91
147,001	148,000	722.80	469.50
148,001	149,000	726.79	472.09
149,001	150,000	730.78	474.68
150,001	151,000	734.77	477.28
151,001	152,000	738.77	479.87
152,001	153,000	742.76	482.46
153,001	154,000	746.75	485.06
154,001	155,000	750.74	487.65
155,001	156,000	754.74	490.24
156,001	157,000	758.73	492.84
157,001	158,000	762.72	495.43
158,001	159,000	766.71	498.02
159,001	160,000	770.71	500.62
160,001	161,000	774.70	503.21
161,001	162,000	778.69	505.80

Building Permit Fees - Suggested			
Total Valuation		Building Permit Fee	Plan Check Fee
74,001	75,000	1,540.81	1,000.92
75,001	76,000	1,555.07	1,010.19
76,001	77,000	1,569.33	1,019.45
77,001	78,000	1,583.60	1,028.71
78,001	79,000	1,597.86	1,037.97
79,001	80,000	1,612.12	1,047.24
80,001	81,000	1,626.38	1,056.50
81,001	82,000	1,640.64	1,065.76
82,001	83,000	1,654.90	1,075.03
83,001	84,000	1,669.17	1,084.29
84,001	85,000	1,683.43	1,093.55
85,001	86,000	1,697.69	1,102.81
86,001	87,000	1,711.95	1,112.08
87,001	88,000	1,726.21	1,121.34
88,001	89,000	1,740.47	1,130.60
89,001	90,000	1,754.74	1,139.87
90,001	91,000	1,769.00	1,149.13
91,001	92,000	1,783.26	1,158.39
92,001	93,000	1,797.52	1,167.65
93,001	94,000	1,811.78	1,176.92
94,001	95,000	1,826.05	1,186.18
95,001	96,000	1,840.31	1,195.44
96,001	97,000	1,854.57	1,204.71
97,001	98,000	1,868.83	1,213.97
98,001	99,000	1,883.09	1,223.23
99,001	100,000	1,897.35	1,232.49
100,001	101,000	1,911.62	1,241.76
101,001	102,000	1,925.88	1,251.02
102,001	103,000	1,940.14	1,260.28
103,001	104,000	1,954.40	1,269.55
104,001	105,000	1,968.66	1,278.81
105,001	106,000	1,982.93	1,288.07
106,001	107,000	1,997.19	1,297.33
107,001	108,000	2,011.45	1,306.60
108,001	109,000	2,025.71	1,315.86
109,001	110,000	2,039.97	1,325.12
110,001	111,000	2,054.23	1,334.39
111,001	112,000	2,068.50	1,343.65
112,001	113,000	2,082.76	1,352.91
113,001	114,000	2,097.02	1,362.17
114,001	115,000	2,111.28	1,371.44
115,001	116,000	2,125.54	1,380.70
116,001	117,000	2,139.81	1,389.96
117,001	118,000	2,154.07	1,399.22
118,001	119,000	2,168.33	1,408.49
119,001	120,000	2,182.59	1,417.75
120,001	121,000	2,196.85	1,427.01
121,001	122,000	2,211.11	1,436.28
122,001	123,000	2,225.38	1,445.54
123,001	124,000	2,239.64	1,454.80
124,001	125,000	2,253.90	1,464.06
125,001	126,000	2,268.16	1,473.33
126,001	127,000	2,282.42	1,482.59
127,001	128,000	2,296.69	1,491.85
128,001	129,000	2,310.95	1,501.12
129,001	130,000	2,325.21	1,510.38
130,001	131,000	2,339.47	1,519.64
131,001	132,000	2,353.73	1,528.90
132,001	133,000	2,367.99	1,538.17
133,001	134,000	2,382.26	1,547.43
134,001	135,000	2,396.52	1,556.69
135,001	136,000	2,410.78	1,565.96
136,001	137,000	2,425.04	1,575.22
137,001	138,000	2,439.30	1,584.48
138,001	139,000	2,453.57	1,593.74
139,001	140,000	2,467.83	1,603.01
140,001	141,000	2,482.09	1,612.27
141,001	142,000	2,496.35	1,621.53
142,001	143,000	2,510.61	1,630.80
143,001	144,000	2,524.87	1,640.06
144,001	145,000	2,539.14	1,649.32
145,001	146,000	2,553.40	1,658.58
146,001	147,000	2,567.66	1,667.85
147,001	148,000	2,581.92	1,677.11
148,001	149,000	2,596.18	1,686.37
149,001	150,000	2,610.45	1,695.64
150,001	151,000	2,624.71	1,704.90
151,001	152,000	2,638.97	1,714.16
152,001	153,000	2,653.23	1,723.42
153,001	154,000	2,667.49	1,732.69
154,001	155,000	2,681.75	1,741.95
155,001	156,000	2,696.02	1,751.21
156,001	157,000	2,710.28	1,760.48
157,001	158,000	2,724.54	1,769.74
158,001	159,000	2,738.80	1,779.00
159,001	160,000	2,753.06	1,788.26
160,001	161,000	2,767.33	1,797.53
161,001	162,000	2,781.59	1,806.79

Building Permit Fees - Current			
Total Valuation		Building Permit Fee	Plan Check Fee
162,001	163,000	782.68	508.39
163,001	164,000	786.68	510.99
164,001	165,000	790.67	513.58
165,001	166,000	794.66	516.17
166,001	167,000	798.65	518.77
167,001	168,000	802.65	521.36
168,001	169,000	806.64	523.95
169,001	170,000	810.63	526.55
170,001	171,000	814.62	529.14
171,001	172,000	818.62	531.73
172,001	173,000	822.61	534.33
173,001	174,000	826.60	536.92
174,001	175,000	830.59	539.51
175,001	176,000	834.59	542.10
176,001	177,000	838.58	544.70
177,001	178,000	842.57	547.29
178,001	179,000	846.56	549.88
179,001	180,000	850.56	552.48
180,001	181,000	854.55	555.07
181,001	182,000	858.54	557.66
182,001	183,000	862.53	560.26
183,001	184,000	866.53	562.85
184,001	185,000	870.52	565.44
185,001	186,000	874.51	568.04
186,001	187,000	878.50	570.63
187,001	188,000	882.50	573.22
188,001	189,000	886.49	575.81
189,001	190,000	890.48	578.41
190,001	191,000	894.47	581.00
191,001	192,000	898.47	583.59
192,001	193,000	902.46	586.19
193,001	194,000	906.45	588.78
194,001	195,000	910.44	591.37
195,001	196,000	914.44	593.97
196,001	197,000	918.43	596.56
197,001	198,000	922.42	599.15
198,001	199,000	926.41	601.75
199,001	200,000	930.41	604.34
200,001	201,000	934.40	606.93
201,001	202,000	938.39	609.52
202,001	203,000	942.38	612.12
203,001	204,000	946.38	614.71
204,001	205,000	950.37	617.30
205,001	206,000	954.36	619.90
206,001	207,000	958.35	622.49
207,001	208,000	962.35	625.08
208,001	209,000	966.34	627.68
209,001	210,000	970.33	630.27
210,001	211,000	974.32	632.86
211,001	212,000	978.32	635.46
212,001	213,000	982.31	638.05
213,001	214,000	986.30	640.64
214,001	215,000	990.29	643.23
215,001	216,000	994.29	645.83
216,001	217,000	998.28	648.42
217,001	218,000	1,002.27	651.01
218,001	219,000	1,006.26	653.61
219,001	220,000	1,010.26	656.20
220,001	221,000	1,014.25	658.79
221,001	222,000	1,018.24	661.39
222,001	223,000	1,022.23	663.98
223,001	224,000	1,026.23	666.57
224,001	225,000	1,030.22	669.17
225,001	226,000	1,034.21	671.76
226,001	227,000	1,038.20	674.35
227,001	228,000	1,042.20	676.94
228,001	229,000	1,046.19	679.54
229,001	230,000	1,050.18	682.13
230,001	231,000	1,054.17	684.72
231,001	232,000	1,058.17	687.32
232,001	233,000	1,062.16	689.91
233,001	234,000	1,066.15	692.50
234,001	235,000	1,070.14	695.10
235,001	236,000	1,074.14	697.69
236,001	237,000	1,078.13	700.28
237,001	238,000	1,082.12	702.88
238,001	239,000	1,086.12	705.47
239,001	240,000	1,090.11	708.06
240,001	241,000	1,094.10	710.65
241,001	242,000	1,098.09	713.25
242,001	243,000	1,102.09	715.84
243,001	244,000	1,106.08	718.43
244,001	245,000	1,110.07	721.03
245,001	246,000	1,114.06	723.62
246,001	247,000	1,118.06	726.21
247,001	248,000	1,122.05	728.81
248,001	249,000	1,126.04	731.40
249,001	250,000	1,130.03	733.99

Building Permit Fees - Suggested			
Total Valuation		Building Permit Fee	Plan Check Fee
162,001	163,000	2,795.85	1,816.05
163,001	164,000	2,810.11	1,825.31
164,001	165,000	2,824.37	1,834.58
165,001	166,000	2,838.63	1,843.84
166,001	167,000	2,852.90	1,853.10
167,001	168,000	2,867.16	1,862.37
168,001	169,000	2,881.42	1,871.63
169,001	170,000	2,895.68	1,880.89
170,001	171,000	2,909.94	1,890.15
171,001	172,000	2,924.21	1,899.42
172,001	173,000	2,938.47	1,908.68
173,001	174,000	2,952.73	1,917.94
174,001	175,000	2,966.99	1,927.21
175,001	176,000	2,981.25	1,936.47
176,001	177,000	2,995.51	1,945.73
177,001	178,000	3,009.78	1,954.99
178,001	179,000	3,024.04	1,964.26
179,001	180,000	3,038.30	1,973.52
180,001	181,000	3,052.56	1,982.78
181,001	182,000	3,066.82	1,992.05
182,001	183,000	3,081.08	2,001.31
183,001	184,000	3,095.35	2,010.57
184,001	185,000	3,109.61	2,019.83
185,001	186,000	3,123.87	2,029.10
186,001	187,000	3,138.13	2,038.36
187,001	188,000	3,152.39	2,047.62
188,001	189,000	3,166.66	2,056.89
189,001	190,000	3,180.92	2,066.15
190,001	191,000	3,195.18	2,075.41
191,001	192,000	3,209.44	2,084.67
192,001	193,000	3,223.70	2,093.94
193,001	194,000	3,237.96	2,103.20
194,001	195,000	3,252.23	2,112.46
195,001	196,000	3,266.49	2,121.73
196,001	197,000	3,280.75	2,130.99
197,001	198,000	3,295.01	2,140.25
198,001	199,000	3,309.27	2,149.51
199,001	200,000	3,323.54	2,158.78
200,001	201,000	3,337.80	2,168.04
201,001	202,000	3,352.06	2,177.30
202,001	203,000	3,366.32	2,186.56
203,001	204,000	3,380.58	2,195.83
204,001	205,000	3,394.84	2,205.09
205,001	206,000	3,409.11	2,214.35
206,001	207,000	3,423.37	2,223.62
207,001	208,000	3,437.63	2,232.88
208,001	209,000	3,451.89	2,242.14
209,001	210,000	3,466.15	2,251.40
210,001	211,000	3,480.42	2,260.67
211,001	212,000	3,494.68	2,269.93
212,001	213,000	3,508.94	2,279.19
213,001	214,000	3,523.20	2,288.46
214,001	215,000	3,537.46	2,297.72
215,001	216,000	3,551.72	2,306.98
216,001	217,000	3,565.99	2,316.24
217,001	218,000	3,580.25	2,325.51
218,001	219,000	3,594.51	2,334.77
219,001	220,000	3,608.77	2,344.03
220,001	221,000	3,623.03	2,353.30
221,001	222,000	3,637.30	2,362.56
222,001	223,000	3,651.56	2,371.82
223,001	224,000	3,665.82	2,381.08
224,001	225,000	3,680.08	2,390.35
225,001	226,000	3,694.34	2,399.61
226,001	227,000	3,708.60	2,408.87
227,001	228,000	3,722.87	2,418.14
228,001	229,000	3,737.13	2,427.40
229,001	230,000	3,751.39	2,436.66
230,001	231,000	3,765.65	2,445.92
231,001	232,000	3,779.91	2,455.19
232,001	233,000	3,794.18	2,464.45
233,001	234,000	3,808.44	2,473.71
234,001	235,000	3,822.70	2,482.98
235,001	236,000	3,836.96	2,492.24
236,001	237,000	3,851.22	2,501.50
237,001	238,000	3,865.48	2,510.76
238,001	239,000	3,879.75	2,520.03
239,001	240,000	3,894.01	2,529.29
240,001	241,000	3,908.27	2,538.55
241,001	242,000	3,922.53	2,547.82
242,001	243,000	3,936.79	2,557.08
243,001	244,000	3,951.06	2,566.34
244,001	245,000	3,965.32	2,575.60
245,001	246,000	3,979.58	2,584.87
246,001	247,000	3,993.84	2,594.13
247,001	248,000	4,008.10	2,603.39
248,001	249,000	4,022.36	2,612.65
249,001	250,000	4,036.63	2,621.92

Building Permit Fees - Current			
Total Valuation		Building Permit Fee	Plan Check Fee
250,001	251,000	1,134.03	736.59
251,001	252,000	1,138.02	739.18
252,001	253,000	1,142.01	741.77
253,001	254,000	1,146.00	744.36
254,001	255,000	1,150.00	746.96
255,001	256,000	1,153.99	749.55
256,001	257,000	1,157.98	752.14
257,001	258,000	1,161.97	754.74
258,001	259,000	1,165.97	757.33
259,001	260,000	1,169.96	759.92
260,001	261,000	1,173.95	762.52
261,001	262,000	1,177.94	765.11
262,001	263,000	1,181.94	767.70
263,001	264,000	1,185.93	770.30
264,001	265,000	1,189.92	772.89
265,001	266,000	1,193.91	775.48
266,001	267,000	1,197.91	778.07
267,001	268,000	1,201.90	780.67
268,001	269,000	1,205.89	783.26
269,001	270,000	1,209.88	785.85
270,001	271,000	1,213.88	788.45
271,001	272,000	1,217.87	791.04
272,001	273,000	1,221.86	793.63
273,001	274,000	1,225.85	796.23
274,001	275,000	1,229.85	798.82
275,001	276,000	1,233.84	801.41
276,001	277,000	1,237.83	804.01
277,001	278,000	1,241.82	806.60
278,001	279,000	1,245.82	809.19
279,001	280,000	1,249.81	811.78
280,001	281,000	1,253.80	814.38
281,001	282,000	1,257.79	816.97
282,001	283,000	1,261.79	819.56
283,001	284,000	1,265.78	822.16
284,001	285,000	1,269.77	824.75
285,001	286,000	1,273.76	827.34
286,001	287,000	1,277.76	829.94
287,001	288,000	1,281.75	832.53
288,001	289,000	1,285.74	835.12
289,001	290,000	1,289.73	837.72
290,001	291,000	1,293.73	840.31
291,001	292,000	1,297.72	842.90
292,001	293,000	1,301.71	845.49
293,001	294,000	1,305.70	848.09
294,001	295,000	1,309.70	850.68
295,001	296,000	1,313.69	853.27
296,001	297,000	1,317.68	855.87
297,001	298,000	1,321.67	858.46
298,001	299,000	1,325.67	861.05
299,001	300,000	1,329.66	863.65
300,001	301,000	1,333.65	866.24
301,001	302,000	1,337.64	868.83
302,001	303,000	1,341.64	871.43
303,001	304,000	1,345.63	874.02
304,001	305,000	1,349.62	876.61
305,001	306,000	1,353.61	879.20
306,001	307,000	1,357.61	881.80
307,001	308,000	1,361.60	884.39
308,001	309,000	1,365.59	886.98
309,001	310,000	1,369.58	889.58
310,001	311,000	1,373.58	892.17
311,001	312,000	1,377.57	894.76
312,001	313,000	1,381.56	897.36
313,001	314,000	1,385.55	899.95
314,001	315,000	1,389.55	902.54
315,001	316,000	1,393.54	905.14
316,001	317,000	1,397.53	907.73
317,001	318,000	1,401.52	910.32
318,001	319,000	1,405.52	912.91
319,001	320,000	1,409.51	915.51
320,001	321,000	1,413.50	918.10
321,001	322,000	1,417.49	920.69
322,001	323,000	1,421.49	923.29
323,001	324,000	1,425.48	925.88
324,001	325,000	1,429.47	928.47
325,001	326,000	1,433.46	931.07
326,001	327,000	1,437.46	933.66
327,001	328,000	1,441.45	936.25
328,001	329,000	1,445.44	938.85
329,001	330,000	1,449.43	941.44
330,001	331,000	1,453.43	944.03
331,001	332,000	1,457.42	946.62
332,001	333,000	1,461.41	949.22
333,001	334,000	1,465.40	951.81
334,001	335,000	1,469.40	954.40
335,001	336,000	1,473.39	957.00
336,001	337,000	1,477.38	959.59
337,001	338,000	1,481.37	962.18

Building Permit Fees - Suggested			
Total Valuation		Building Permit Fee	Plan Check Fee
250,001	251,000	4,050.89	2,631.18
251,001	252,000	4,065.15	2,640.44
252,001	253,000	4,079.41	2,649.71
253,001	254,000	4,093.67	2,658.97
254,001	255,000	4,107.94	2,668.23
255,001	256,000	4,122.20	2,677.49
256,001	257,000	4,136.46	2,686.76
257,001	258,000	4,150.72	2,696.02
258,001	259,000	4,164.98	2,705.28
259,001	260,000	4,179.24	2,714.55
260,001	261,000	4,193.51	2,723.81
261,001	262,000	4,207.77	2,733.07
262,001	263,000	4,222.03	2,742.33
263,001	264,000	4,236.29	2,751.60
264,001	265,000	4,250.55	2,760.86
265,001	266,000	4,264.82	2,770.12
266,001	267,000	4,279.08	2,779.39
267,001	268,000	4,293.34	2,788.65
268,001	269,000	4,307.60	2,797.91
269,001	270,000	4,321.86	2,807.17
270,001	271,000	4,336.12	2,816.44
271,001	272,000	4,350.39	2,825.70
272,001	273,000	4,364.65	2,834.96
273,001	274,000	4,378.91	2,844.23
274,001	275,000	4,393.17	2,853.49
275,001	276,000	4,407.43	2,862.75
276,001	277,000	4,421.69	2,872.01
277,001	278,000	4,435.96	2,881.28
278,001	279,000	4,450.22	2,890.54
279,001	280,000	4,464.48	2,899.80
280,001	281,000	4,478.74	2,909.07
281,001	282,000	4,493.00	2,918.33
282,001	283,000	4,507.27	2,927.59
283,001	284,000	4,521.53	2,936.85
284,001	285,000	4,535.79	2,946.12
285,001	286,000	4,550.05	2,955.38
286,001	287,000	4,564.31	2,964.64
287,001	288,000	4,578.57	2,973.90
288,001	289,000	4,592.84	2,983.17
289,001	290,000	4,607.10	2,992.43
290,001	291,000	4,621.36	3,001.69
291,001	292,000	4,635.62	3,010.96
292,001	293,000	4,649.88	3,020.22
293,001	294,000	4,664.15	3,029.48
294,001	295,000	4,678.41	3,038.74
295,001	296,000	4,692.67	3,048.01
296,001	297,000	4,706.93	3,057.27
297,001	298,000	4,721.19	3,066.53
298,001	299,000	4,735.45	3,075.80
299,001	300,000	4,749.72	3,085.06
300,001	301,000	4,763.98	3,094.32
301,001	302,000	4,778.24	3,103.58
302,001	303,000	4,792.50	3,112.85
303,001	304,000	4,806.76	3,122.11
304,001	305,000	4,821.03	3,131.37
305,001	306,000	4,835.29	3,140.64
306,001	307,000	4,849.55	3,149.90
307,001	308,000	4,863.81	3,159.16
308,001	309,000	4,878.07	3,168.42
309,001	310,000	4,892.33	3,177.69
310,001	311,000	4,906.60	3,186.95
311,001	312,000	4,920.86	3,196.21
312,001	313,000	4,935.12	3,205.48
313,001	314,000	4,949.38	3,214.74
314,001	315,000	4,963.64	3,224.00
315,001	316,000	4,977.91	3,233.26
316,001	317,000	4,992.17	3,242.53
317,001	318,000	5,006.43	3,251.79
318,001	319,000	5,020.69	3,261.05
319,001	320,000	5,034.95	3,270.32
320,001	321,000	5,049.21	3,279.58
321,001	322,000	5,063.48	3,288.84
322,001	323,000	5,077.74	3,298.10
323,001	324,000	5,092.00	3,307.37
324,001	325,000	5,106.26	3,316.63
325,001	326,000	5,120.52	3,325.89
326,001	327,000	5,134.79	3,335.16
327,001	328,000	5,149.05	3,344.42
328,001	329,000	5,163.31	3,353.68
329,001	330,000	5,177.57	3,362.94
330,001	331,000	5,191.83	3,372.21
331,001	332,000	5,206.09	3,381.47
332,001	333,000	5,220.36	3,390.73
333,001	334,000	5,234.62	3,399.99
334,001	335,000	5,248.88	3,409.26
335,001	336,000	5,263.14	3,418.52
336,001	337,000	5,277.40	3,427.78
337,001	338,000	5,291.67	3,437.05

Building Permit Fees - Current			
Total Valuation		Building Permit Fee	Plan Check Fee
338,001	339,000	1,485.37	964.78
339,001	340,000	1,489.36	967.37
340,001	341,000	1,493.35	969.96
341,001	342,000	1,497.34	972.56
342,001	343,000	1,501.34	975.15
343,001	344,000	1,505.33	977.74
344,001	345,000	1,509.32	980.33
345,001	346,000	1,513.31	982.93
346,001	347,000	1,517.31	985.52
347,001	348,000	1,521.30	988.11
348,001	349,000	1,525.29	990.71
349,001	350,000	1,529.28	993.30
350,001	351,000	1,533.28	995.89
351,001	352,000	1,537.27	998.49
352,001	353,000	1,541.26	1,001.08
353,001	354,000	1,545.25	1,003.67
354,001	355,000	1,549.25	1,006.27
355,001	356,000	1,553.24	1,008.86
356,001	357,000	1,557.23	1,011.45
357,001	358,000	1,561.22	1,014.05
358,001	359,000	1,565.22	1,016.64
359,001	360,000	1,569.21	1,019.23
360,001	361,000	1,573.20	1,021.82
361,001	362,000	1,577.20	1,024.42
362,001	363,000	1,581.19	1,027.01
363,001	364,000	1,585.18	1,029.60
364,001	365,000	1,589.17	1,032.20
365,001	366,000	1,593.17	1,034.79
366,001	367,000	1,597.16	1,037.38
367,001	368,000	1,601.15	1,039.98
368,001	369,000	1,605.14	1,042.57
369,001	370,000	1,609.14	1,045.16
370,001	371,000	1,613.13	1,047.76
371,001	372,000	1,617.12	1,050.35
372,001	373,000	1,621.11	1,052.94
373,001	374,000	1,625.11	1,055.53
374,001	375,000	1,629.10	1,058.13
375,001	376,000	1,633.09	1,060.72
376,001	377,000	1,637.08	1,063.31
377,001	378,000	1,641.08	1,065.91
378,001	379,000	1,645.07	1,068.50
379,001	380,000	1,649.06	1,071.09
380,001	381,000	1,653.05	1,073.69
381,001	382,000	1,657.05	1,076.28
382,001	383,000	1,661.04	1,078.87
383,001	384,000	1,665.03	1,081.47
384,001	385,000	1,669.02	1,084.06
385,001	386,000	1,673.02	1,086.65
386,001	387,000	1,677.01	1,089.24
387,001	388,000	1,681.00	1,091.84
388,001	389,000	1,684.99	1,094.43
389,001	390,000	1,688.99	1,097.02
390,001	391,000	1,692.98	1,099.62
391,001	392,000	1,696.97	1,102.21
392,001	393,000	1,700.96	1,104.80
393,001	394,000	1,704.96	1,107.40
394,001	395,000	1,708.95	1,109.99
395,001	396,000	1,712.94	1,112.58
396,001	397,000	1,716.93	1,115.18
397,001	398,000	1,720.93	1,117.77
398,001	399,000	1,724.92	1,120.36
399,001	400,000	1,728.91	1,122.95
400,001	401,000	1,732.90	1,125.55
401,001	402,000	1,736.90	1,128.14
402,001	403,000	1,740.89	1,130.73
403,001	404,000	1,744.88	1,133.33
404,001	405,000	1,748.87	1,135.92
405,001	406,000	1,752.87	1,138.51
406,001	407,000	1,756.86	1,141.11
407,001	408,000	1,760.85	1,143.70
408,001	409,000	1,764.84	1,146.29
409,001	410,000	1,768.84	1,148.89
410,001	411,000	1,772.83	1,151.48
411,001	412,000	1,776.82	1,154.07
412,001	413,000	1,780.81	1,156.66
413,001	414,000	1,784.81	1,159.26
414,001	415,000	1,788.80	1,161.85
415,001	416,000	1,792.79	1,164.44
416,001	417,000	1,796.78	1,167.04
417,001	418,000	1,800.78	1,169.63
418,001	419,000	1,804.77	1,172.22
419,001	420,000	1,808.76	1,174.82
420,001	421,000	1,812.75	1,177.41
421,001	422,000	1,816.75	1,180.00
422,001	423,000	1,820.74	1,182.60
423,001	424,000	1,824.73	1,185.19
424,001	425,000	1,828.72	1,187.78
425,001	426,000	1,832.72	1,190.37

Building Permit Fees - Suggested			
Total Valuation		Building Permit Fee	Plan Check Fee
338,001	339,000	5,305.93	3,446.31
339,001	340,000	5,320.19	3,455.57
340,001	341,000	5,334.45	3,464.83
341,001	342,000	5,348.71	3,474.10
342,001	343,000	5,362.97	3,483.36
343,001	344,000	5,377.24	3,492.62
344,001	345,000	5,391.50	3,501.89
345,001	346,000	5,405.76	3,511.15
346,001	347,000	5,420.02	3,520.41
347,001	348,000	5,434.28	3,529.67
348,001	349,000	5,448.55	3,538.94
349,001	350,000	5,462.81	3,548.20
350,001	351,000	5,477.07	3,557.46
351,001	352,000	5,491.33	3,566.73
352,001	353,000	5,505.59	3,575.99
353,001	354,000	5,519.85	3,585.25
354,001	355,000	5,534.12	3,594.51
355,001	356,000	5,548.38	3,603.78
356,001	357,000	5,562.64	3,613.04
357,001	358,000	5,576.90	3,622.30
358,001	359,000	5,591.16	3,631.57
359,001	360,000	5,605.43	3,640.83
360,001	361,000	5,619.69	3,650.09
361,001	362,000	5,633.95	3,659.35
362,001	363,000	5,648.21	3,668.62
363,001	364,000	5,662.47	3,677.88
364,001	365,000	5,676.73	3,687.14
365,001	366,000	5,691.00	3,696.41
366,001	367,000	5,705.26	3,705.67
367,001	368,000	5,719.52	3,714.93
368,001	369,000	5,733.78	3,724.19
369,001	370,000	5,748.04	3,733.46
370,001	371,000	5,762.30	3,742.72
371,001	372,000	5,776.57	3,751.98
372,001	373,000	5,790.83	3,761.24
373,001	374,000	5,805.09	3,770.51
374,001	375,000	5,819.35	3,779.77
375,001	376,000	5,833.61	3,789.03
376,001	377,000	5,847.88	3,798.30
377,001	378,000	5,862.14	3,807.56
378,001	379,000	5,876.40	3,816.82
379,001	380,000	5,890.66	3,826.08
380,001	381,000	5,904.92	3,835.35
381,001	382,000	5,919.18	3,844.61
382,001	383,000	5,933.45	3,853.87
383,001	384,000	5,947.71	3,863.14
384,001	385,000	5,961.97	3,872.40
385,001	386,000	5,976.23	3,881.66
386,001	387,000	5,990.49	3,890.92
387,001	388,000	6,004.76	3,900.19
388,001	389,000	6,019.02	3,909.45
389,001	390,000	6,033.28	3,918.71
390,001	391,000	6,047.54	3,927.98
391,001	392,000	6,061.80	3,937.24
392,001	393,000	6,076.06	3,946.50
393,001	394,000	6,090.33	3,955.76
394,001	395,000	6,104.59	3,965.03
395,001	396,000	6,118.85	3,974.29
396,001	397,000	6,133.11	3,983.55
397,001	398,000	6,147.37	3,992.82
398,001	399,000	6,161.64	4,002.08
399,001	400,000	6,175.90	4,011.34
400,001	401,000	6,190.16	4,020.60
401,001	402,000	6,204.42	4,029.87
402,001	403,000	6,218.68	4,039.13
403,001	404,000	6,232.94	4,048.39
404,001	405,000	6,247.21	4,057.66
405,001	406,000	6,261.47	4,066.92
406,001	407,000	6,275.73	4,076.18
407,001	408,000	6,289.99	4,085.44
408,001	409,000	6,304.25	4,094.71
409,001	410,000	6,318.52	4,103.97
410,001	411,000	6,332.78	4,113.23
411,001	412,000	6,347.04	4,122.50
412,001	413,000	6,361.30	4,131.76
413,001	414,000	6,375.56	4,141.02
414,001	415,000	6,389.82	4,150.28
415,001	416,000	6,404.09	4,159.55
416,001	417,000	6,418.35	4,168.81
417,001	418,000	6,432.61	4,178.07
418,001	419,000	6,446.87	4,187.33
419,001	420,000	6,461.13	4,196.60
420,001	421,000	6,475.40	4,205.86
421,001	422,000	6,489.66	4,215.12
422,001	423,000	6,503.92	4,224.39
423,001	424,000	6,518.18	4,233.65
424,001	425,000	6,532.44	4,242.91
425,001	426,000	6,546.70	4,252.17

Building Permit Fees - Current			
Total Valuation		Building Permit Fee	Plan Check Fee
426,001	427,000	1,836.71	1,192.97
427,001	428,000	1,840.70	1,195.56
428,001	429,000	1,844.69	1,198.15
429,001	430,000	1,848.69	1,200.75
430,001	431,000	1,852.68	1,203.34
431,001	432,000	1,856.67	1,205.93
432,001	433,000	1,860.66	1,208.53
433,001	434,000	1,864.66	1,211.12
434,001	435,000	1,868.65	1,213.71
435,001	436,000	1,872.64	1,216.31
436,001	437,000	1,876.63	1,218.90
437,001	438,000	1,880.63	1,221.49
438,001	439,000	1,884.62	1,224.08
439,001	440,000	1,888.61	1,226.68
440,001	441,000	1,892.60	1,229.27
441,001	442,000	1,896.60	1,231.86
442,001	443,000	1,900.59	1,234.46
443,001	444,000	1,904.58	1,237.05
444,001	445,000	1,908.57	1,239.64
445,001	446,000	1,912.57	1,242.24
446,001	447,000	1,916.56	1,244.83
447,001	448,000	1,920.55	1,247.42
448,001	449,000	1,924.54	1,250.02
449,001	450,000	1,928.54	1,252.61
450,001	451,000	1,932.53	1,255.20
451,001	452,000	1,936.52	1,257.79
452,001	453,000	1,940.51	1,260.39
453,001	454,000	1,944.51	1,262.98
454,001	455,000	1,948.50	1,265.57
455,001	456,000	1,952.49	1,268.17
456,001	457,000	1,956.48	1,270.76
457,001	458,000	1,960.48	1,273.35
458,001	459,000	1,964.47	1,275.95
459,001	460,000	1,968.46	1,278.54
460,001	461,000	1,972.45	1,281.13
461,001	462,000	1,976.45	1,283.73
462,001	463,000	1,980.44	1,286.32
463,001	464,000	1,984.43	1,288.91
464,001	465,000	1,988.42	1,291.50
465,001	466,000	1,992.42	1,294.10
466,001	467,000	1,996.41	1,296.69
467,001	468,000	2,000.40	1,299.28
468,001	469,000	2,004.39	1,301.88
469,001	470,000	2,008.39	1,304.47
470,001	471,000	2,012.38	1,307.06
471,001	472,000	2,016.37	1,309.66
472,001	473,000	2,020.36	1,312.25
473,001	474,000	2,024.36	1,314.84
474,001	475,000	2,028.35	1,317.44
475,001	476,000	2,032.34	1,320.03
476,001	477,000	2,036.33	1,322.62
477,001	478,000	2,040.33	1,325.21
478,001	479,000	2,044.32	1,327.81
479,001	480,000	2,048.31	1,330.40
480,001	481,000	2,052.30	1,332.99
481,001	482,000	2,056.30	1,335.59
482,001	483,000	2,060.29	1,338.18
483,001	484,000	2,064.28	1,340.77
484,001	485,000	2,068.27	1,343.37
485,001	486,000	2,072.27	1,345.96
486,001	487,000	2,076.26	1,348.55
487,001	488,000	2,080.25	1,351.15
488,001	489,000	2,084.25	1,353.74
489,001	490,000	2,088.24	1,356.33
490,001	491,000	2,092.23	1,358.92
491,001	492,000	2,096.22	1,361.52
492,001	493,000	2,100.22	1,364.11
493,001	494,000	2,104.21	1,366.70
494,001	495,000	2,108.20	1,369.30
495,001	496,000	2,112.19	1,371.89
496,001	497,000	2,116.19	1,374.48
497,001	498,000	2,120.18	1,377.08
498,001	499,000	2,124.17	1,379.67
499,001	500,000	2,128.16	1,382.26
500,001	501,000	2,131.52	1,385.49
501,001	502,000	2,134.87	1,387.67
502,001	503,000	2,138.23	1,389.85
503,001	504,000	2,141.58	1,392.03
504,001	505,000	2,144.94	1,394.21
505,001	506,000	2,148.29	1,396.39
506,001	507,000	2,151.64	1,398.57
507,001	508,000	2,155.00	1,400.75
508,001	509,000	2,158.35	1,402.93
509,001	510,000	2,161.71	1,405.11
510,001	511,000	2,165.06	1,407.29
511,001	512,000	2,168.42	1,409.47
512,001	513,000	2,171.77	1,411.65
513,001	514,000	2,175.13	1,413.83

Building Permit Fees - Suggested			
Total Valuation		Building Permit Fee	Plan Check Fee
426,001	427,000	6,560.97	4,261.44
427,001	428,000	6,575.23	4,270.70
428,001	429,000	6,589.49	4,279.96
429,001	430,000	6,603.75	4,289.23
430,001	431,000	6,618.01	4,298.49
431,001	432,000	6,632.28	4,307.75
432,001	433,000	6,646.54	4,317.01
433,001	434,000	6,660.80	4,326.28
434,001	435,000	6,675.06	4,335.54
435,001	436,000	6,689.32	4,344.80
436,001	437,000	6,703.58	4,354.07
437,001	438,000	6,717.85	4,363.33
438,001	439,000	6,732.11	4,372.59
439,001	440,000	6,746.37	4,381.85
440,001	441,000	6,760.63	4,391.12
441,001	442,000	6,774.89	4,400.38
442,001	443,000	6,789.16	4,409.64
443,001	444,000	6,803.42	4,418.91
444,001	445,000	6,817.68	4,428.17
445,001	446,000	6,831.94	4,437.43
446,001	447,000	6,846.20	4,446.69
447,001	448,000	6,860.46	4,455.96
448,001	449,000	6,874.73	4,465.22
449,001	450,000	6,888.99	4,474.48
450,001	451,000	6,903.25	4,483.75
451,001	452,000	6,917.51	4,493.01
452,001	453,000	6,931.77	4,502.27
453,001	454,000	6,946.03	4,511.53
454,001	455,000	6,960.30	4,520.80
455,001	456,000	6,974.56	4,530.06
456,001	457,000	6,988.82	4,539.32
457,001	458,000	7,003.08	4,548.59
458,001	459,000	7,017.34	4,557.85
459,001	460,000	7,031.61	4,567.11
460,001	461,000	7,045.87	4,576.37
461,001	462,000	7,060.13	4,585.64
462,001	463,000	7,074.39	4,594.90
463,001	464,000	7,088.65	4,604.16
464,001	465,000	7,102.91	4,613.42
465,001	466,000	7,117.18	4,622.69
466,001	467,000	7,131.44	4,631.95
467,001	468,000	7,145.70	4,641.21
468,001	469,000	7,159.96	4,650.48
469,001	470,000	7,174.22	4,659.74
470,001	471,000	7,188.49	4,669.00
471,001	472,000	7,202.75	4,678.26
472,001	473,000	7,217.01	4,687.53
473,001	474,000	7,231.27	4,696.79
474,001	475,000	7,245.53	4,706.05
475,001	476,000	7,259.79	4,715.32
476,001	477,000	7,274.06	4,724.58
477,001	478,000	7,288.32	4,733.84
478,001	479,000	7,302.58	4,743.10
479,001	480,000	7,316.84	4,752.37
480,001	481,000	7,331.10	4,761.63
481,001	482,000	7,345.37	4,770.89
482,001	483,000	7,359.63	4,780.16
483,001	484,000	7,373.89	4,789.42
484,001	485,000	7,388.15	4,798.68
485,001	486,000	7,402.41	4,807.94
486,001	487,000	7,416.67	4,817.21
487,001	488,000	7,430.94	4,826.47
488,001	489,000	7,445.20	4,835.73
489,001	490,000	7,459.46	4,845.00
490,001	491,000	7,473.72	4,854.26
491,001	492,000	7,487.98	4,863.52
492,001	493,000	7,502.25	4,872.78
493,001	494,000	7,516.51	4,882.05
494,001	495,000	7,530.77	4,891.31
495,001	496,000	7,545.03	4,900.57
496,001	497,000	7,559.29	4,909.84
497,001	498,000	7,573.55	4,919.10
498,001	499,000	7,587.82	4,928.36
499,001	500,000	7,602.08	4,937.62
500,001	501,000	7,616.34	4,946.88
501,001	502,000	7,630.60	4,956.14
502,001	503,000	7,644.86	4,965.40
503,001	504,000	7,659.12	4,974.66
504,001	505,000	7,673.38	4,983.92
505,001	506,000	7,687.64	4,993.18
506,001	507,000	7,701.90	5,002.44
507,001	508,000	7,716.16	5,011.70
508,001	509,000	7,730.42	5,020.96
509,001	510,000	7,744.68	5,030.22
510,001	511,000	7,758.94	5,039.48
511,001	512,000	7,773.20	5,048.74
512,001	513,000	7,787.46	5,058.00
513,001	514,000	7,801.72	5,067.26

Building Permit Fees - Current			
Total Valuation		Building Permit Fee	Plan Check Fee
514,001	515,000	2,178.48	1,416.01
515,001	516,000	2,181.84	1,418.19
516,001	517,000	2,185.19	1,420.37
517,001	518,000	2,188.54	1,422.55
518,001	519,000	2,191.90	1,424.73
519,001	520,000	2,195.25	1,426.91
520,001	521,000	2,198.61	1,429.10
521,001	522,000	2,201.96	1,431.28
522,001	523,000	2,205.32	1,433.46
523,001	524,000	2,208.67	1,435.64
524,001	525,000	2,212.03	1,437.82
525,001	526,000	2,215.38	1,440.00
526,001	527,000	2,218.74	1,442.18
527,001	528,000	2,222.09	1,444.36
528,001	529,000	2,225.44	1,446.54
529,001	530,000	2,228.80	1,448.72
530,001	531,000	2,232.15	1,450.90
531,001	532,000	2,235.51	1,453.08
532,001	533,000	2,238.86	1,455.26
533,001	534,000	2,242.22	1,457.44
534,001	535,000	2,245.57	1,459.62
535,001	536,000	2,248.93	1,461.80
536,001	537,000	2,252.28	1,463.98
537,001	538,000	2,255.64	1,466.16
538,001	539,000	2,258.99	1,468.34
539,001	540,000	2,262.34	1,470.52
540,001	541,000	2,265.70	1,472.70
541,001	542,000	2,269.05	1,474.88
542,001	543,000	2,272.41	1,477.07
543,001	544,000	2,275.76	1,479.25
544,001	545,000	2,279.12	1,481.43
545,001	546,000	2,282.47	1,483.61
546,001	547,000	2,285.83	1,485.79
547,001	548,000	2,289.18	1,487.97
548,001	549,000	2,292.54	1,490.15
549,001	550,000	2,295.89	1,492.33
550,001	551,000	2,299.24	1,494.51
551,001	552,000	2,302.60	1,496.69
552,001	553,000	2,305.95	1,498.87
553,001	554,000	2,309.31	1,501.05
554,001	555,000	2,312.66	1,503.23
555,001	556,000	2,316.02	1,505.41
556,001	557,000	2,319.37	1,507.59
557,001	558,000	2,322.73	1,509.77
558,001	559,000	2,326.08	1,511.95
559,001	560,000	2,329.44	1,514.13
560,001	561,000	2,332.79	1,516.31
561,001	562,000	2,336.14	1,518.49
562,001	563,000	2,339.50	1,520.67
563,001	564,000	2,342.85	1,522.85
564,001	565,000	2,346.21	1,525.04
565,001	566,000	2,349.56	1,527.22
566,001	567,000	2,352.92	1,529.40
567,001	568,000	2,356.27	1,531.58
568,001	569,000	2,359.63	1,533.76
569,001	570,000	2,362.98	1,535.94
570,001	571,000	2,366.34	1,538.12
571,001	572,000	2,369.69	1,540.30
572,001	573,000	2,373.04	1,542.48
573,001	574,000	2,376.40	1,544.66
574,001	575,000	2,379.75	1,546.84
575,001	576,000	2,383.11	1,549.02
576,001	577,000	2,386.46	1,551.20
577,001	578,000	2,389.82	1,553.38
578,001	579,000	2,393.17	1,555.56
579,001	580,000	2,396.53	1,557.74
580,001	581,000	2,399.88	1,559.92
581,001	582,000	2,403.24	1,562.10
582,001	583,000	2,406.59	1,564.28
583,001	584,000	2,409.94	1,566.46
584,001	585,000	2,413.30	1,568.64
585,001	586,000	2,416.65	1,570.82
586,001	587,000	2,420.01	1,573.01
587,001	588,000	2,423.36	1,575.19
588,001	589,000	2,426.72	1,577.37
589,001	590,000	2,430.07	1,579.55
590,001	591,000	2,433.43	1,581.73
591,001	592,000	2,436.78	1,583.91
592,001	593,000	2,440.13	1,586.09
593,001	594,000	2,443.49	1,588.27
594,001	595,000	2,446.84	1,590.45
595,001	596,000	2,450.20	1,592.63
596,001	597,000	2,453.55	1,594.81
597,001	598,000	2,456.91	1,596.99
598,001	599,000	2,460.26	1,599.17
599,001	600,000	2,463.62	1,601.35
600,001	601,000	2,466.97	1,603.53
601,001	602,000	2,470.33	1,605.71

Building Permit Fees - Suggested			
Total Valuation		Building Permit Fee	Plan Check Fee
514,001	515,000	7,781.82	5,058.18
515,001	516,000	7,793.80	5,065.97
516,001	517,000	7,805.79	5,073.76
517,001	518,000	7,817.77	5,081.55
518,001	519,000	7,829.75	5,089.34
519,001	520,000	7,841.74	5,097.13
520,001	521,000	7,853.72	5,104.92
521,001	522,000	7,865.70	5,112.71
522,001	523,000	7,877.68	5,120.49
523,001	524,000	7,889.67	5,128.28
524,001	525,000	7,901.65	5,136.07
525,001	526,000	7,913.63	5,143.86
526,001	527,000	7,925.62	5,151.65
527,001	528,000	7,937.60	5,159.44
528,001	529,000	7,949.58	5,167.23
529,001	530,000	7,961.56	5,175.02
530,001	531,000	7,973.55	5,182.81
531,001	532,000	7,985.53	5,190.59
532,001	533,000	7,997.51	5,198.38
533,001	534,000	8,009.50	5,206.17
534,001	535,000	8,021.48	5,213.96
535,001	536,000	8,033.46	5,221.75
536,001	537,000	8,045.44	5,229.54
537,001	538,000	8,057.43	5,237.33
538,001	539,000	8,069.41	5,245.12
539,001	540,000	8,081.39	5,252.91
540,001	541,000	8,093.38	5,260.69
541,001	542,000	8,105.36	5,268.48
542,001	543,000	8,117.34	5,276.27
543,001	544,000	8,129.32	5,284.06
544,001	545,000	8,141.31	5,291.85
545,001	546,000	8,153.29	5,299.64
546,001	547,000	8,165.27	5,307.43
547,001	548,000	8,177.26	5,315.22
548,001	549,000	8,189.24	5,323.00
549,001	550,000	8,201.22	5,330.79
550,001	551,000	8,213.20	5,338.58
551,001	552,000	8,225.19	5,346.37
552,001	553,000	8,237.17	5,354.16
553,001	554,000	8,249.15	5,361.95
554,001	555,000	8,261.14	5,369.74
555,001	556,000	8,273.12	5,377.53
556,001	557,000	8,285.10	5,385.32
557,001	558,000	8,297.08	5,393.10
558,001	559,000	8,309.07	5,400.89
559,001	560,000	8,321.05	5,408.68
560,001	561,000	8,333.03	5,416.47
561,001	562,000	8,345.02	5,424.26
562,001	563,000	8,357.00	5,432.05
563,001	564,000	8,368.98	5,439.84
564,001	565,000	8,380.96	5,447.63
565,001	566,000	8,392.95	5,455.42
566,001	567,000	8,404.93	5,463.20
567,001	568,000	8,416.91	5,470.99
568,001	569,000	8,428.90	5,478.78
569,001	570,000	8,440.88	5,486.57
570,001	571,000	8,452.86	5,494.36
571,001	572,000	8,464.84	5,502.15
572,001	573,000	8,476.83	5,509.94
573,001	574,000	8,488.81	5,517.73
574,001	575,000	8,500.79	5,525.52
575,001	576,000	8,512.78	5,533.30
576,001	577,000	8,524.76	5,541.09
577,001	578,000	8,536.74	5,548.88
578,001	579,000	8,548.72	5,556.67
579,001	580,000	8,560.71	5,564.46
580,001	581,000	8,572.69	5,572.25
581,001	582,000	8,584.67	5,580.04
582,001	583,000	8,596.66	5,587.83
583,001	584,000	8,608.64	5,595.61
584,001	585,000	8,620.62	5,603.40
585,001	586,000	8,632.60	5,611.19
586,001	587,000	8,644.59	5,618.98
587,001	588,000	8,656.57	5,626.77
588,001	589,000	8,668.55	5,634.56
589,001	590,000	8,680.54	5,642.35
590,001	591,000	8,692.52	5,650.14
591,001	592,000	8,704.50	5,657.93
592,001	593,000	8,716.48	5,665.71
593,001	594,000	8,728.47	5,673.50
594,001	595,000	8,740.45	5,681.29
595,001	596,000	8,752.43	5,689.08
596,001	597,000	8,764.42	5,696.87
597,001	598,000	8,776.40	5,704.66
598,001	599,000	8,788.38	5,712.45
599,001	600,000	8,800.36	5,720.24
600,001	601,000	8,812.35	5,728.03
601,001	602,000	8,824.33	5,735.81

Building Permit Fees - Current			
Total Valuation		Building Permit Fee	Plan Check Fee
602,001	603,000	2,473.68	1,607.89
603,001	604,000	2,477.03	1,610.07
604,001	605,000	2,480.39	1,612.25
605,001	606,000	2,483.74	1,614.43
606,001	607,000	2,487.10	1,616.61
607,001	608,000	2,490.45	1,618.79
608,001	609,000	2,493.81	1,620.97
609,001	610,000	2,497.16	1,623.16
610,001	611,000	2,500.52	1,625.34
611,001	612,000	2,503.87	1,627.52
612,001	613,000	2,507.23	1,629.70
613,001	614,000	2,510.58	1,631.88
614,001	615,000	2,513.93	1,634.06
615,001	616,000	2,517.29	1,636.24
616,001	617,000	2,520.64	1,638.42
617,001	618,000	2,524.00	1,640.60
618,001	619,000	2,527.35	1,642.78
619,001	620,000	2,530.71	1,644.96
620,001	621,000	2,534.06	1,647.14
621,001	622,000	2,537.42	1,649.32
622,001	623,000	2,540.77	1,651.50
623,001	624,000	2,544.13	1,653.68
624,001	625,000	2,547.48	1,655.86
625,001	626,000	2,550.83	1,658.04
626,001	627,000	2,554.19	1,660.22
627,001	628,000	2,557.54	1,662.40
628,001	629,000	2,560.90	1,664.58
629,001	630,000	2,564.25	1,666.76
630,001	631,000	2,567.61	1,668.94
631,001	632,000	2,570.96	1,671.13
632,001	633,000	2,574.32	1,673.31
633,001	634,000	2,577.67	1,675.49
634,001	635,000	2,581.03	1,677.67
635,001	636,000	2,584.38	1,679.85
636,001	637,000	2,587.73	1,682.03
637,001	638,000	2,591.09	1,684.21
638,001	639,000	2,594.44	1,686.39
639,001	640,000	2,597.80	1,688.57
640,001	641,000	2,601.15	1,690.75
641,001	642,000	2,604.51	1,692.93
642,001	643,000	2,607.86	1,695.11
643,001	644,000	2,611.22	1,697.29
644,001	645,000	2,614.57	1,699.47
645,001	646,000	2,617.93	1,701.65
646,001	647,000	2,621.28	1,703.83
647,001	648,000	2,624.63	1,706.01
648,001	649,000	2,627.99	1,708.19
649,001	650,000	2,631.34	1,710.37
650,001	651,000	2,634.70	1,712.55
651,001	652,000	2,638.05	1,714.73
652,001	653,000	2,641.41	1,716.91
653,001	654,000	2,644.76	1,719.10
654,001	655,000	2,648.12	1,721.28
655,001	656,000	2,651.47	1,723.46
656,001	657,000	2,654.83	1,725.64
657,001	658,000	2,658.18	1,727.82
658,001	659,000	2,661.53	1,730.00
659,001	660,000	2,664.89	1,732.18
660,001	661,000	2,668.24	1,734.36
661,001	662,000	2,671.60	1,736.54
662,001	663,000	2,674.95	1,738.72
663,001	664,000	2,678.31	1,740.90
664,001	665,000	2,681.66	1,743.08
665,001	666,000	2,685.02	1,745.26
666,001	667,000	2,688.37	1,747.44
667,001	668,000	2,691.73	1,749.62
668,001	669,000	2,695.08	1,751.80
669,001	670,000	2,698.43	1,753.98
670,001	671,000	2,701.79	1,756.16
671,001	672,000	2,705.14	1,758.34
672,001	673,000	2,708.50	1,760.52
673,001	674,000	2,711.85	1,762.70
674,001	675,000	2,715.21	1,764.88
675,001	676,000	2,718.56	1,767.07
676,001	677,000	2,721.92	1,769.25
677,001	678,000	2,725.27	1,771.43
678,001	679,000	2,728.63	1,773.61
679,001	680,000	2,731.98	1,775.79
680,001	681,000	2,735.33	1,777.97
681,001	682,000	2,738.69	1,780.15
682,001	683,000	2,742.04	1,782.33
683,001	684,000	2,745.40	1,784.51
684,001	685,000	2,748.75	1,786.69
685,001	686,000	2,752.11	1,788.87
686,001	687,000	2,755.46	1,791.05
687,001	688,000	2,758.82	1,793.23
688,001	689,000	2,762.17	1,795.41
689,001	690,000	2,765.53	1,797.59

Building Permit Fees - Suggested			
Total Valuation		Building Permit Fee	Plan Check Fee
602,001	603,000	8,836.31	5,743.60
603,001	604,000	8,848.30	5,751.39
604,001	605,000	8,860.28	5,759.18
605,001	606,000	8,872.26	5,766.97
606,001	607,000	8,884.24	5,774.76
607,001	608,000	8,896.23	5,782.55
608,001	609,000	8,908.21	5,790.34
609,001	610,000	8,920.19	5,798.13
610,001	611,000	8,932.18	5,805.91
611,001	612,000	8,944.16	5,813.70
612,001	613,000	8,956.14	5,821.49
613,001	614,000	8,968.12	5,829.28
614,001	615,000	8,980.11	5,837.07
615,001	616,000	8,992.09	5,844.86
616,001	617,000	9,004.07	5,852.65
617,001	618,000	9,016.06	5,860.44
618,001	619,000	9,028.04	5,868.22
619,001	620,000	9,040.02	5,876.01
620,001	621,000	9,052.00	5,883.80
621,001	622,000	9,063.99	5,891.59
622,001	623,000	9,075.97	5,899.38
623,001	624,000	9,087.95	5,907.17
624,001	625,000	9,099.94	5,914.96
625,001	626,000	9,111.92	5,922.75
626,001	627,000	9,123.90	5,930.54
627,001	628,000	9,135.88	5,938.32
628,001	629,000	9,147.87	5,946.11
629,001	630,000	9,159.85	5,953.90
630,001	631,000	9,171.83	5,961.69
631,001	632,000	9,183.82	5,969.48
632,001	633,000	9,195.80	5,977.27
633,001	634,000	9,207.78	5,985.06
634,001	635,000	9,219.76	5,992.85
635,001	636,000	9,231.75	6,000.64
636,001	637,000	9,243.73	6,008.42
637,001	638,000	9,255.71	6,016.21
638,001	639,000	9,267.70	6,024.00
639,001	640,000	9,279.68	6,031.79
640,001	641,000	9,291.66	6,039.58
641,001	642,000	9,303.64	6,047.37
642,001	643,000	9,315.63	6,055.16
643,001	644,000	9,327.61	6,062.95
644,001	645,000	9,339.59	6,070.74
645,001	646,000	9,351.58	6,078.52
646,001	647,000	9,363.56	6,086.31
647,001	648,000	9,375.54	6,094.10
648,001	649,000	9,387.52	6,101.89
649,001	650,000	9,399.51	6,109.68
650,001	651,000	9,411.49	6,117.47
651,001	652,000	9,423.47	6,125.26
652,001	653,000	9,435.46	6,133.05
653,001	654,000	9,447.44	6,140.84
654,001	655,000	9,459.42	6,148.62
655,001	656,000	9,471.40	6,156.41
656,001	657,000	9,483.39	6,164.20
657,001	658,000	9,495.37	6,171.99
658,001	659,000	9,507.35	6,179.78
659,001	660,000	9,519.34	6,187.57
660,001	661,000	9,531.32	6,195.36
661,001	662,000	9,543.30	6,203.15
662,001	663,000	9,555.28	6,210.93
663,001	664,000	9,567.27	6,218.72
664,001	665,000	9,579.25	6,226.51
665,001	666,000	9,591.23	6,234.30
666,001	667,000	9,603.22	6,242.09
667,001	668,000	9,615.20	6,249.88
668,001	669,000	9,627.18	6,257.67
669,001	670,000	9,639.16	6,265.46
670,001	671,000	9,651.15	6,273.25
671,001	672,000	9,663.13	6,281.03
672,001	673,000	9,675.11	6,288.82
673,001	674,000	9,687.10	6,296.61
674,001	675,000	9,699.08	6,304.40
675,001	676,000	9,711.06	6,312.19
676,001	677,000	9,723.04	6,319.98
677,001	678,000	9,735.03	6,327.77
678,001	679,000	9,747.01	6,335.56
679,001	680,000	9,758.99	6,343.35
680,001	681,000	9,770.98	6,351.13
681,001	682,000	9,782.96	6,358.92
682,001	683,000	9,794.94	6,366.71
683,001	684,000	9,806.92	6,374.50
684,001	685,000	9,818.91	6,382.29
685,001	686,000	9,830.89	6,390.08
686,001	687,000	9,842.87	6,397.87
687,001	688,000	9,854.86	6,405.66
688,001	689,000	9,866.84	6,413.45
689,001	690,000	9,878.82	6,421.23

Building Permit Fees - Current			
Total Valuation		Building Permit Fee	Plan Check Fee
690,001	691,000	2,768.88	1,799.77
691,001	692,000	2,772.23	1,801.95
692,001	693,000	2,775.59	1,804.13
693,001	694,000	2,778.94	1,806.31
694,001	695,000	2,782.30	1,808.49
695,001	696,000	2,785.65	1,810.67
696,001	697,000	2,789.01	1,812.85
697,001	698,000	2,792.36	1,815.04
698,001	699,000	2,795.72	1,817.22
699,001	700,000	2,799.07	1,819.40
700,001	701,000	2,802.43	1,821.58
701,001	702,000	2,805.78	1,823.76
702,001	703,000	2,809.13	1,825.94
703,001	704,000	2,812.49	1,828.12
704,001	705,000	2,815.84	1,830.30
705,001	706,000	2,819.20	1,832.48
706,001	707,000	2,822.55	1,834.66
707,001	708,000	2,825.91	1,836.84
708,001	709,000	2,829.26	1,839.02
709,001	710,000	2,832.62	1,841.20
710,001	711,000	2,835.97	1,843.38
711,001	712,000	2,839.33	1,845.56
712,001	713,000	2,842.68	1,847.74
713,001	714,000	2,846.03	1,849.92
714,001	715,000	2,849.39	1,852.10
715,001	716,000	2,852.74	1,854.28
716,001	717,000	2,856.10	1,856.46
717,001	718,000	2,859.45	1,858.64
718,001	719,000	2,862.81	1,860.82
719,001	720,000	2,866.16	1,863.01
720,001	721,000	2,869.52	1,865.19
721,001	722,000	2,872.87	1,867.37
722,001	723,000	2,876.23	1,869.55
723,001	724,000	2,879.58	1,871.73
724,001	725,000	2,882.93	1,873.91
725,001	726,000	2,886.29	1,876.09
726,001	727,000	2,889.64	1,878.27
727,001	728,000	2,893.00	1,880.45
728,001	729,000	2,896.35	1,882.63
729,001	730,000	2,899.71	1,884.81
730,001	731,000	2,903.06	1,886.99
731,001	732,000	2,906.42	1,889.17
732,001	733,000	2,909.77	1,891.35
733,001	734,000	2,913.13	1,893.53
734,001	735,000	2,916.48	1,895.71
735,001	736,000	2,919.83	1,897.89
736,001	737,000	2,923.19	1,900.07
737,001	738,000	2,926.54	1,902.25
738,001	739,000	2,929.90	1,904.43
739,001	740,000	2,933.25	1,906.61
740,001	741,000	2,936.61	1,908.79
741,001	742,000	2,939.96	1,910.97
742,001	743,000	2,943.32	1,913.16
743,001	744,000	2,946.67	1,915.34
744,001	745,000	2,950.03	1,917.52
745,001	746,000	2,953.38	1,919.70
746,001	747,000	2,956.73	1,921.88
747,001	748,000	2,960.09	1,924.06
748,001	749,000	2,963.44	1,926.24
749,001	750,000	2,966.80	1,928.42
750,001	751,000	2,970.15	1,930.60
751,001	752,000	2,973.51	1,932.78
752,001	753,000	2,976.86	1,934.96
753,001	754,000	2,980.22	1,937.14
754,001	755,000	2,983.57	1,939.32
755,001	756,000	2,986.92	1,941.50
756,001	757,000	2,990.28	1,943.68
757,001	758,000	2,993.63	1,945.86
758,001	759,000	2,996.99	1,948.04
759,001	760,000	3,000.34	1,950.22
760,001	761,000	3,003.70	1,952.40
761,001	762,000	3,007.05	1,954.58
762,001	763,000	3,010.41	1,956.76
763,001	764,000	3,013.76	1,958.94
764,001	765,000	3,017.12	1,961.13
765,001	766,000	3,020.47	1,963.31
766,001	767,000	3,023.82	1,965.49
767,001	768,000	3,027.18	1,967.67
768,001	769,000	3,030.53	1,969.85
769,001	770,000	3,033.89	1,972.03
770,001	771,000	3,037.24	1,974.21
771,001	772,000	3,040.60	1,976.39
772,001	773,000	3,043.95	1,978.57
773,001	774,000	3,047.31	1,980.75
774,001	775,000	3,050.66	1,982.93
775,001	776,000	3,054.02	1,985.11
776,001	777,000	3,057.37	1,987.29
777,001	778,000	3,060.72	1,989.47

Building Permit Fees - Suggested			
Total Valuation		Building Permit Fee	Plan Check Fee
690,001	691,000	9,890.80	6,429.02
691,001	692,000	9,902.79	6,436.81
692,001	693,000	9,914.77	6,444.60
693,001	694,000	9,926.75	6,452.39
694,001	695,000	9,938.74	6,460.18
695,001	696,000	9,950.72	6,467.97
696,001	697,000	9,962.70	6,475.76
697,001	698,000	9,974.68	6,483.54
698,001	699,000	9,986.67	6,491.33
699,001	700,000	9,998.65	6,499.12
700,001	701,000	10,010.63	6,506.91
701,001	702,000	10,022.62	6,514.70
702,001	703,000	10,034.60	6,522.49
703,001	704,000	10,046.58	6,530.28
704,001	705,000	10,058.56	6,538.07
705,001	706,000	10,070.55	6,545.86
706,001	707,000	10,082.53	6,553.64
707,001	708,000	10,094.51	6,561.43
708,001	709,000	10,106.50	6,569.22
709,001	710,000	10,118.48	6,577.01
710,001	711,000	10,130.46	6,584.80
711,001	712,000	10,142.44	6,592.59
712,001	713,000	10,154.43	6,600.38
713,001	714,000	10,166.41	6,608.17
714,001	715,000	10,178.39	6,615.96
715,001	716,000	10,190.38	6,623.74
716,001	717,000	10,202.36	6,631.53
717,001	718,000	10,214.34	6,639.32
718,001	719,000	10,226.32	6,647.11
719,001	720,000	10,238.31	6,654.90
720,001	721,000	10,250.29	6,662.69
721,001	722,000	10,262.27	6,670.48
722,001	723,000	10,274.26	6,678.27
723,001	724,000	10,286.24	6,686.06
724,001	725,000	10,298.22	6,693.84
725,001	726,000	10,310.20	6,701.63
726,001	727,000	10,322.19	6,709.42
727,001	728,000	10,334.17	6,717.21
728,001	729,000	10,346.15	6,725.00
729,001	730,000	10,358.14	6,732.79
730,001	731,000	10,370.12	6,740.58
731,001	732,000	10,382.10	6,748.37
732,001	733,000	10,394.08	6,756.15
733,001	734,000	10,406.07	6,763.94
734,001	735,000	10,418.05	6,771.73
735,001	736,000	10,430.03	6,779.52
736,001	737,000	10,442.02	6,787.31
737,001	738,000	10,454.00	6,795.10
738,001	739,000	10,466.98	6,802.89
739,001	740,000	10,477.96	6,810.68
740,001	741,000	10,488.95	6,818.47
741,001	742,000	10,501.93	6,826.25
742,001	743,000	10,513.91	6,834.04
743,001	744,000	10,525.90	6,841.83
744,001	745,000	10,537.88	6,849.62
745,001	746,000	10,549.86	6,857.41
746,001	747,000	10,561.84	6,865.20
747,001	748,000	10,573.83	6,872.99
748,001	749,000	10,585.81	6,880.78
749,001	750,000	10,597.79	6,888.57
750,001	751,000	10,609.78	6,896.35
751,001	752,000	10,621.76	6,904.14
752,001	753,000	10,633.74	6,911.93
753,001	754,000	10,645.72	6,919.72
754,001	755,000	10,657.71	6,927.51
755,001	756,000	10,669.69	6,935.30
756,001	757,000	10,681.67	6,943.09
757,001	758,000	10,693.66	6,950.88
758,001	759,000	10,705.64	6,958.67
759,001	760,000	10,717.62	6,966.45
760,001	761,000	10,729.60	6,974.24
761,001	762,000	10,741.59	6,982.03
762,001	763,000	10,753.57	6,989.82
763,001	764,000	10,765.55	6,997.61
764,001	765,000	10,777.54	7,005.40
765,001	766,000	10,789.52	7,013.19
766,001	767,000	10,801.50	7,020.98
767,001	768,000	10,813.48	7,028.76
768,001	769,000	10,825.47	7,036.55
769,001	770,000	10,837.45	7,044.34
770,001	771,000	10,849.43	7,052.13
771,001	772,000	10,861.42	7,059.92
772,001	773,000	10,873.40	7,067.71
773,001	774,000	10,885.38	7,075.50
774,001	775,000	10,897.36	7,083.29
775,001	776,000	10,909.35	7,091.08
776,001	777,000	10,921.33	7,098.86
777,001	778,000	10,933.31	7,106.65

Building Permit Fees - Current			
Total Valuation		Building Permit Fee	Plan Check Fee
778,001	779,000	3,064.08	1,991.65
779,001	780,000	3,067.43	1,993.83
780,001	781,000	3,070.79	1,996.01
781,001	782,000	3,074.14	1,998.19
782,001	783,000	3,077.50	2,000.37
783,001	784,000	3,080.85	2,002.55
784,001	785,000	3,084.21	2,004.73
785,001	786,000	3,087.56	2,006.91
786,001	787,000	3,090.92	2,009.10
787,001	788,000	3,094.27	2,011.28
788,001	789,000	3,097.62	2,013.46
789,001	790,000	3,100.98	2,015.64
790,001	791,000	3,104.33	2,017.82
791,001	792,000	3,107.69	2,020.00
792,001	793,000	3,111.04	2,022.18
793,001	794,000	3,114.40	2,024.36
794,001	795,000	3,117.75	2,026.54
795,001	796,000	3,121.11	2,028.72
796,001	797,000	3,124.46	2,030.90
797,001	798,000	3,127.82	2,033.08
798,001	799,000	3,131.17	2,035.26
799,001	800,000	3,134.52	2,037.44
800,001	801,000	3,137.88	2,039.62
801,001	802,000	3,141.23	2,041.80
802,001	803,000	3,144.59	2,043.98
803,001	804,000	3,147.94	2,046.16
804,001	805,000	3,151.30	2,048.34
805,001	806,000	3,154.65	2,050.52
806,001	807,000	3,158.01	2,052.70
807,001	808,000	3,161.36	2,054.88
808,001	809,000	3,164.72	2,057.07
809,001	810,000	3,168.07	2,059.25
810,001	811,000	3,171.42	2,061.43
811,001	812,000	3,174.78	2,063.61
812,001	813,000	3,178.13	2,065.79
813,001	814,000	3,181.49	2,067.97
814,001	815,000	3,184.84	2,070.15
815,001	816,000	3,188.20	2,072.33
816,001	817,000	3,191.55	2,074.51
817,001	818,000	3,194.91	2,076.69
818,001	819,000	3,198.26	2,078.87
819,001	820,000	3,201.62	2,081.05
820,001	821,000	3,204.97	2,083.23
821,001	822,000	3,208.32	2,085.41
822,001	823,000	3,211.68	2,087.59
823,001	824,000	3,215.03	2,089.77
824,001	825,000	3,218.39	2,091.95
825,001	826,000	3,221.74	2,094.13
826,001	827,000	3,225.10	2,096.31
827,001	828,000	3,228.45	2,098.49
828,001	829,000	3,231.81	2,100.67
829,001	830,000	3,235.16	2,102.85
830,001	831,000	3,238.52	2,105.04
831,001	832,000	3,241.87	2,107.22
832,001	833,000	3,245.22	2,109.40
833,001	834,000	3,248.58	2,111.58
834,001	835,000	3,251.93	2,113.76
835,001	836,000	3,255.29	2,115.94
836,001	837,000	3,258.64	2,118.12
837,001	838,000	3,262.00	2,120.30
838,001	839,000	3,265.35	2,122.48
839,001	840,000	3,268.71	2,124.66
840,001	841,000	3,272.06	2,126.84
841,001	842,000	3,275.42	2,129.02
842,001	843,000	3,278.77	2,131.20
843,001	844,000	3,282.12	2,133.38
844,001	845,000	3,285.48	2,135.56
845,001	846,000	3,288.83	2,137.74
846,001	847,000	3,292.19	2,139.92
847,001	848,000	3,295.54	2,142.10
848,001	849,000	3,298.90	2,144.28
849,001	850,000	3,302.25	2,146.46
850,001	851,000	3,305.61	2,148.64
851,001	852,000	3,308.96	2,150.82
852,001	853,000	3,312.32	2,153.00
853,001	854,000	3,315.67	2,155.19
854,001	855,000	3,319.02	2,157.37
855,001	856,000	3,322.38	2,159.55
856,001	857,000	3,325.73	2,161.73
857,001	858,000	3,329.09	2,163.91
858,001	859,000	3,332.44	2,166.09
859,001	860,000	3,335.80	2,168.27
860,001	861,000	3,339.15	2,170.45
861,001	862,000	3,342.51	2,172.63
862,001	863,000	3,345.86	2,174.81
863,001	864,000	3,349.22	2,176.99
864,001	865,000	3,352.57	2,179.17
865,001	866,000	3,355.92	2,181.35

Building Permit Fees - Suggested			
Total Valuation		Building Permit Fee	Plan Check Fee
778,001	779,000	10,945.30	7,114.44
779,001	780,000	10,957.28	7,122.23
780,001	781,000	10,969.26	7,130.02
781,001	782,000	10,981.24	7,137.81
782,001	783,000	10,993.23	7,145.60
783,001	784,000	11,005.21	7,153.39
784,001	785,000	11,017.19	7,161.18
785,001	786,000	11,029.18	7,168.96
786,001	787,000	11,041.16	7,176.75
787,001	788,000	11,053.14	7,184.54
788,001	789,000	11,065.12	7,192.33
789,001	790,000	11,077.11	7,200.12
790,001	791,000	11,089.09	7,207.91
791,001	792,000	11,101.07	7,215.70
792,001	793,000	11,113.06	7,223.49
793,001	794,000	11,125.04	7,231.28
794,001	795,000	11,137.02	7,239.06
795,001	796,000	11,149.00	7,246.85
796,001	797,000	11,160.99	7,254.64
797,001	798,000	11,172.97	7,262.43
798,001	799,000	11,184.95	7,270.22
799,001	800,000	11,196.94	7,278.01
800,001	801,000	11,208.92	7,285.80
801,001	802,000	11,220.90	7,293.59
802,001	803,000	11,232.88	7,301.37
803,001	804,000	11,244.87	7,309.16
804,001	805,000	11,256.85	7,316.95
805,001	806,000	11,268.83	7,324.74
806,001	807,000	11,280.82	7,332.53
807,001	808,000	11,292.80	7,340.32
808,001	809,000	11,304.78	7,348.11
809,001	810,000	11,316.76	7,355.90
810,001	811,000	11,328.75	7,363.69
811,001	812,000	11,340.73	7,371.47
812,001	813,000	11,352.71	7,379.26
813,001	814,000	11,364.70	7,387.05
814,001	815,000	11,376.68	7,394.84
815,001	816,000	11,388.66	7,402.63
816,001	817,000	11,400.64	7,410.42
817,001	818,000	11,412.63	7,418.21
818,001	819,000	11,424.61	7,426.00
819,001	820,000	11,436.59	7,433.79
820,001	821,000	11,448.58	7,441.57
821,001	822,000	11,460.56	7,449.36
822,001	823,000	11,472.54	7,457.15
823,001	824,000	11,484.52	7,464.94
824,001	825,000	11,496.51	7,472.73
825,001	826,000	11,508.49	7,480.52
826,001	827,000	11,520.47	7,488.31
827,001	828,000	11,532.46	7,496.10
828,001	829,000	11,544.44	7,503.89
829,001	830,000	11,556.42	7,511.67
830,001	831,000	11,568.40	7,519.46
831,001	832,000	11,580.39	7,527.25
832,001	833,000	11,592.37	7,535.04
833,001	834,000	11,604.35	7,542.83
834,001	835,000	11,616.34	7,550.62
835,001	836,000	11,628.32	7,558.41
836,001	837,000	11,640.30	7,566.20
837,001	838,000	11,652.28	7,573.99
838,001	839,000	11,664.27	7,581.77
839,001	840,000	11,676.25	7,589.56
840,001	841,000	11,688.23	7,597.35
841,001	842,000	11,700.22	7,605.14
842,001	843,000	11,712.20	7,612.93
843,001	844,000	11,724.18	7,620.72
844,001	845,000	11,736.16	7,628.51
845,001	846,000	11,748.15	7,636.30
846,001	847,000	11,760.13	7,644.08
847,001	848,000	11,772.11	7,651.87
848,001	849,000	11,784.10	7,659.66
849,001	850,000	11,796.08	7,667.45
850,001	851,000	11,808.06	7,675.24
851,001	852,000	11,820.04	7,683.03
852,001	853,000	11,832.03	7,690.82
853,001	854,000	11,844.01	7,698.61
854,001	855,000	11,855.99	7,706.40
855,001	856,000	11,867.98	7,714.18
856,001	857,000	11,879.96	7,721.97
857,001	858,000	11,891.94	7,729.76
858,001	859,000	11,903.92	7,737.55
859,001	860,000	11,915.91	7,745.34
860,001	861,000	11,927.89	7,753.13
861,001	862,000	11,939.87	7,760.92
862,001	863,000	11,951.86	7,768.71
863,001	864,000	11,963.84	7,776.50
864,001	865,000	11,975.82	7,784.28
865,001	866,000	11,987.80	7,792.07

Building Permit Fees - Current			
Total Valuation		Building Permit Fee	Plan Check Fee
866,001	867,000	3,359.28	2,183.53
867,001	868,000	3,362.63	2,185.71
868,001	869,000	3,365.99	2,187.89
869,001	870,000	3,369.34	2,190.07
870,001	871,000	3,372.70	2,192.25
871,001	872,000	3,376.05	2,194.43
872,001	873,000	3,379.41	2,196.61
873,001	874,000	3,382.76	2,198.79
874,001	875,000	3,386.12	2,200.97
875,001	876,000	3,389.47	2,203.16
876,001	877,000	3,392.82	2,205.34
877,001	878,000	3,396.18	2,207.52
878,001	879,000	3,399.53	2,209.70
879,001	880,000	3,402.89	2,211.88
880,001	881,000	3,406.24	2,214.06
881,001	882,000	3,409.60	2,216.24
882,001	883,000	3,412.95	2,218.42
883,001	884,000	3,416.31	2,220.60
884,001	885,000	3,419.66	2,222.78
885,001	886,000	3,423.02	2,224.96
886,001	887,000	3,426.37	2,227.14
887,001	888,000	3,429.72	2,229.32
888,001	889,000	3,433.08	2,231.50
889,001	890,000	3,436.43	2,233.68
890,001	891,000	3,439.79	2,235.86
891,001	892,000	3,443.14	2,238.04
892,001	893,000	3,446.50	2,240.22
893,001	894,000	3,449.85	2,242.40
894,001	895,000	3,453.21	2,244.58
895,001	896,000	3,456.56	2,246.76
896,001	897,000	3,459.92	2,248.94
897,001	898,000	3,463.27	2,251.13
898,001	899,000	3,466.62	2,253.31
899,001	900,000	3,469.98	2,255.49
900,001	901,000	3,473.33	2,257.67
901,001	902,000	3,476.69	2,259.85
902,001	903,000	3,480.04	2,262.03
903,001	904,000	3,483.40	2,264.21
904,001	905,000	3,486.75	2,266.39
905,001	906,000	3,490.11	2,268.57
906,001	907,000	3,493.46	2,270.75
907,001	908,000	3,496.82	2,272.93
908,001	909,000	3,500.17	2,275.11
909,001	910,000	3,503.52	2,277.29
910,001	911,000	3,506.88	2,279.47
911,001	912,000	3,510.23	2,281.65
912,001	913,000	3,513.59	2,283.83
913,001	914,000	3,516.94	2,286.01
914,001	915,000	3,520.30	2,288.19
915,001	916,000	3,523.65	2,290.37
916,001	917,000	3,527.01	2,292.55
917,001	918,000	3,530.36	2,294.73
918,001	919,000	3,533.72	2,296.91
919,001	920,000	3,537.07	2,299.10
920,001	921,000	3,540.42	2,301.28
921,001	922,000	3,543.78	2,303.46
922,001	923,000	3,547.13	2,305.64
923,001	924,000	3,550.49	2,307.82
924,001	925,000	3,553.84	2,310.00
925,001	926,000	3,557.20	2,312.18
926,001	927,000	3,560.55	2,314.36
927,001	928,000	3,563.91	2,316.54
928,001	929,000	3,567.26	2,318.72
929,001	930,000	3,570.61	2,320.90
930,001	931,000	3,573.97	2,323.08
931,001	932,000	3,577.32	2,325.26
932,001	933,000	3,580.68	2,327.44
933,001	934,000	3,584.03	2,329.62
934,001	935,000	3,587.39	2,331.80
935,001	936,000	3,590.74	2,333.98
936,001	937,000	3,594.10	2,336.16
937,001	938,000	3,597.45	2,338.34
938,001	939,000	3,600.81	2,340.52
939,001	940,000	3,604.16	2,342.70
940,001	941,000	3,607.51	2,344.88
941,001	942,000	3,610.87	2,347.07
942,001	943,000	3,614.22	2,349.25
943,001	944,000	3,617.58	2,351.43
944,001	945,000	3,620.93	2,353.61
945,001	946,000	3,624.29	2,355.79
946,001	947,000	3,627.64	2,357.97
947,001	948,000	3,631.00	2,360.15
948,001	949,000	3,634.35	2,362.33
949,001	950,000	3,637.71	2,364.51
950,001	951,000	3,641.06	2,366.69
951,001	952,000	3,644.41	2,368.87
952,001	953,000	3,647.77	2,371.05
953,001	954,000	3,651.12	2,373.23

Building Permit Fees - Suggested			
Total Valuation		Building Permit Fee	Plan Check Fee
866,001	867,000	11,999.79	7,799.86
867,001	868,000	12,011.77	7,807.65
868,001	869,000	12,023.75	7,815.44
869,001	870,000	12,035.74	7,823.23
870,001	871,000	12,047.72	7,831.02
871,001	872,000	12,059.70	7,838.81
872,001	873,000	12,071.68	7,846.60
873,001	874,000	12,083.67	7,854.38
874,001	875,000	12,095.65	7,862.17
875,001	876,000	12,107.63	7,869.96
876,001	877,000	12,119.62	7,877.75
877,001	878,000	12,131.60	7,885.54
878,001	879,000	12,143.58	7,893.33
879,001	880,000	12,155.56	7,901.12
880,001	881,000	12,167.55	7,908.91
881,001	882,000	12,179.53	7,916.69
882,001	883,000	12,191.51	7,924.48
883,001	884,000	12,203.50	7,932.27
884,001	885,000	12,215.48	7,940.06
885,001	886,000	12,227.46	7,947.85
886,001	887,000	12,239.44	7,955.64
887,001	888,000	12,251.43	7,963.43
888,001	889,000	12,263.41	7,971.22
889,001	890,000	12,275.39	7,979.01
890,001	891,000	12,287.38	7,986.79
891,001	892,000	12,299.36	7,994.58
892,001	893,000	12,311.34	8,002.37
893,001	894,000	12,323.32	8,010.16
894,001	895,000	12,335.31	8,017.95
895,001	896,000	12,347.29	8,025.74
896,001	897,000	12,359.27	8,033.53
897,001	898,000	12,371.26	8,041.32
898,001	899,000	12,383.24	8,049.11
899,001	900,000	12,395.22	8,056.89
900,001	901,000	12,407.20	8,064.68
901,001	902,000	12,419.19	8,072.47
902,001	903,000	12,431.17	8,080.26
903,001	904,000	12,443.15	8,088.05
904,001	905,000	12,455.14	8,095.84
905,001	906,000	12,467.12	8,103.63
906,001	907,000	12,479.10	8,111.42
907,001	908,000	12,491.08	8,119.21
908,001	909,000	12,503.07	8,126.99
909,001	910,000	12,515.05	8,134.78
910,001	911,000	12,527.03	8,142.57
911,001	912,000	12,539.02	8,150.36
912,001	913,000	12,551.00	8,158.15
913,001	914,000	12,562.98	8,165.94
914,001	915,000	12,574.96	8,173.73
915,001	916,000	12,586.95	8,181.52
916,001	917,000	12,598.93	8,189.30
917,001	918,000	12,610.91	8,197.09
918,001	919,000	12,622.90	8,204.88
919,001	920,000	12,634.88	8,212.67
920,001	921,000	12,646.86	8,220.46
921,001	922,000	12,658.84	8,228.25
922,001	923,000	12,670.83	8,236.04
923,001	924,000	12,682.81	8,243.83
924,001	925,000	12,694.79	8,251.62
925,001	926,000	12,706.78	8,259.40
926,001	927,000	12,718.76	8,267.19
927,001	928,000	12,730.74	8,274.98
928,001	929,000	12,742.72	8,282.77
929,001	930,000	12,754.71	8,290.56
930,001	931,000	12,766.69	8,298.35
931,001	932,000	12,778.67	8,306.14
932,001	933,000	12,790.66	8,313.93
933,001	934,000	12,802.64	8,321.72
934,001	935,000	12,814.62	8,329.50
935,001	936,000	12,826.60	8,337.29
936,001	937,000	12,838.59	8,345.08
937,001	938,000	12,850.57	8,352.87
938,001	939,000	12,862.55	8,360.66
939,001	940,000	12,874.54	8,368.45
940,001	941,000	12,886.52	8,376.24
941,001	942,000	12,898.50	8,384.03
942,001	943,000	12,910.48	8,391.82
943,001	944,000	12,922.47	8,399.60
944,001	945,000	12,934.45	8,407.39
945,001	946,000	12,946.43	8,415.18
946,001	947,000	12,958.42	8,422.97
947,001	948,000	12,970.40	8,430.76
948,001	949,000	12,982.38	8,438.55
949,001	950,000	12,994.36	8,446.34
950,001	951,000	13,006.35	8,454.13
951,001	952,000	13,018.33	8,461.91
952,001	953,000	13,030.31	8,469.70
953,001	954,000	13,042.30	8,477.49

Building Permit Fees - Current			
Total Valuation		Building Permit Fee	Plan Check Fee
954,001	955,000	3,654.48	2,375.41
955,001	956,000	3,657.83	2,377.59
956,001	957,000	3,661.19	2,379.77
957,001	958,000	3,664.54	2,381.95
958,001	959,000	3,667.90	2,384.13
959,001	960,000	3,671.25	2,386.31
960,001	961,000	3,674.61	2,388.49
961,001	962,000	3,677.96	2,390.67
962,001	963,000	3,681.31	2,392.85
963,001	964,000	3,684.67	2,395.04
964,001	965,000	3,688.02	2,397.22
965,001	966,000	3,691.38	2,399.40
966,001	967,000	3,694.73	2,401.58
967,001	968,000	3,698.09	2,403.76
968,001	969,000	3,701.44	2,405.94
969,001	970,000	3,704.80	2,408.12
970,001	971,000	3,708.15	2,410.30
971,001	972,000	3,711.51	2,412.48
972,001	973,000	3,714.86	2,414.66
973,001	974,000	3,718.21	2,416.84
974,001	975,000	3,721.57	2,419.02
975,001	976,000	3,724.92	2,421.20
976,001	977,000	3,728.28	2,423.38
977,001	978,000	3,731.63	2,425.56
978,001	979,000	3,734.99	2,427.74
979,001	980,000	3,738.34	2,429.92
980,001	981,000	3,741.70	2,432.10
981,001	982,000	3,745.05	2,434.28
982,001	983,000	3,748.41	2,436.46
983,001	984,000	3,751.76	2,438.64
984,001	985,000	3,755.11	2,440.82
985,001	986,000	3,758.47	2,443.00
986,001	987,000	3,761.82	2,445.19
987,001	988,000	3,765.18	2,447.37
988,001	989,000	3,768.53	2,449.55
989,001	990,000	3,771.89	2,451.73
990,001	991,000	3,775.24	2,453.91
991,001	992,000	3,778.60	2,456.09
992,001	993,000	3,781.95	2,458.27
993,001	994,000	3,785.31	2,460.45
994,001	995,000	3,788.66	2,462.63
995,001	996,000	3,792.01	2,464.81
996,001	997,000	3,795.37	2,466.99
997,001	998,000	3,798.72	2,469.17
998,001	999,000	3,802.08	2,471.35
999,001	1,000,000	3,805.43	2,473.53
1,000,001	1,001,000	3,808.79	2,475.71
1,001,001	1,002,000	3,812.14	2,477.89
1,002,001	1,003,000	3,815.50	2,480.07
1,003,001	1,004,000	3,818.85	2,482.25
1,004,001	1,005,000	3,822.21	2,484.43
1,005,001	1,006,000	3,825.56	2,486.61
1,006,001	1,007,000	3,828.91	2,488.79
1,007,001	1,008,000	3,832.27	2,490.97
1,008,001	1,009,000	3,835.62	2,493.16
1,009,001	1,010,000	3,838.98	2,495.34
1,010,001	1,011,000	3,842.33	2,497.52
1,011,001	1,012,000	3,845.69	2,499.70
1,012,001	1,013,000	3,849.04	2,501.88
1,013,001	1,014,000	3,852.40	2,504.06
1,014,001	1,015,000	3,855.75	2,506.24
1,015,001	1,016,000	3,859.11	2,508.42
1,016,001	1,017,000	3,862.46	2,510.60
1,017,001	1,018,000	3,865.81	2,512.78
1,018,001	1,019,000	3,869.17	2,514.96
1,019,001	1,020,000	3,872.52	2,517.14
1,020,001	1,021,000	3,875.88	2,519.32
1,021,001	1,022,000	3,879.23	2,521.50
1,022,001	1,023,000	3,882.59	2,523.68
1,023,001	1,024,000	3,885.94	2,525.86
1,024,001	1,025,000	3,889.30	2,528.04
1,025,001	1,026,000	3,892.65	2,530.22
1,026,001	1,027,000	3,896.01	2,532.40
1,027,001	1,028,000	3,899.36	2,534.58
1,028,001	1,029,000	3,902.71	2,536.76
1,029,001	1,030,000	3,906.07	2,538.94
1,030,001	1,031,000	3,909.42	2,541.13
1,031,001	1,032,000	3,912.78	2,543.31
1,032,001	1,033,000	3,916.13	2,545.49
1,033,001	1,034,000	3,919.49	2,547.67
1,034,001	1,035,000	3,922.84	2,549.85
1,035,001	1,036,000	3,926.20	2,552.03
1,036,001	1,037,000	3,929.55	2,554.21
1,037,001	1,038,000	3,932.91	2,556.39
1,038,001	1,039,000	3,936.26	2,558.57
1,039,001	1,040,000	3,939.61	2,560.75
1,040,001	1,041,000	3,942.97	2,562.93
1,041,001	1,042,000	3,946.32	2,565.11

Building Permit Fees - Suggested			
Total Valuation		Building Permit Fee	Plan Check Fee
954,001	955,000	13,054.28	8,485.28
955,001	956,000	13,066.26	8,493.07
956,001	957,000	13,078.24	8,500.86
957,001	958,000	13,090.23	8,508.65
958,001	959,000	13,102.21	8,516.44
959,001	960,000	13,114.19	8,524.23
960,001	961,000	13,126.18	8,532.01
961,001	962,000	13,138.16	8,539.80
962,001	963,000	13,150.14	8,547.59
963,001	964,000	13,162.12	8,555.38
964,001	965,000	13,174.11	8,563.17
965,001	966,000	13,186.09	8,570.96
966,001	967,000	13,198.07	8,578.75
967,001	968,000	13,210.06	8,586.54
968,001	969,000	13,222.04	8,594.33
969,001	970,000	13,234.02	8,602.11
970,001	971,000	13,246.00	8,609.90
971,001	972,000	13,257.99	8,617.69
972,001	973,000	13,269.97	8,625.48
973,001	974,000	13,281.95	8,633.27
974,001	975,000	13,293.94	8,641.06
975,001	976,000	13,305.92	8,648.85
976,001	977,000	13,317.90	8,656.64
977,001	978,000	13,329.89	8,664.43
978,001	979,000	13,341.87	8,672.21
979,001	980,000	13,353.85	8,680.00
980,001	981,000	13,365.83	8,687.79
981,001	982,000	13,377.82	8,695.58
982,001	983,000	13,389.80	8,703.37
983,001	984,000	13,401.78	8,711.16
984,001	985,000	13,413.77	8,718.95
985,001	986,000	13,425.75	8,726.74
986,001	987,000	13,437.73	8,734.52
987,001	988,000	13,449.71	8,742.31
988,001	989,000	13,461.70	8,750.10
989,001	990,000	13,473.68	8,757.89
990,001	991,000	13,485.66	8,765.68
991,001	992,000	13,497.65	8,773.47
992,001	993,000	13,509.63	8,781.26
993,001	994,000	13,521.61	8,789.05
994,001	995,000	13,533.59	8,796.84
995,001	996,000	13,545.58	8,804.62
996,001	997,000	13,557.56	8,812.41
997,001	998,000	13,569.54	8,820.20
998,001	999,000	13,581.53	8,827.99
999,001	1,000,000	13,593.51	8,835.78
1,000,001	1,001,000	13,605.49	8,843.57
1,001,001	1,002,000	13,617.47	8,851.36
1,002,001	1,003,000	13,629.46	8,859.15
1,003,001	1,004,000	13,641.44	8,866.94
1,004,001	1,005,000	13,653.42	8,874.72
1,005,001	1,006,000	13,665.41	8,882.51
1,006,001	1,007,000	13,677.39	8,890.30
1,007,001	1,008,000	13,689.37	8,898.09
1,008,001	1,009,000	13,701.35	8,905.88
1,009,001	1,010,000	13,713.34	8,913.67
1,010,001	1,011,000	13,725.32	8,921.46
1,011,001	1,012,000	13,737.30	8,929.25
1,012,001	1,013,000	13,749.29	8,937.04
1,013,001	1,014,000	13,761.27	8,944.82
1,014,001	1,015,000	13,773.25	8,952.61
1,015,001	1,016,000	13,785.23	8,960.40
1,016,001	1,017,000	13,797.22	8,968.19
1,017,001	1,018,000	13,809.20	8,975.98
1,018,001	1,019,000	13,821.18	8,983.77
1,019,001	1,020,000	13,833.17	8,991.56
1,020,001	1,021,000	13,845.15	8,999.35
1,021,001	1,022,000	13,857.13	9,007.14
1,022,001	1,023,000	13,869.11	9,014.92
1,023,001	1,024,000	13,881.10	9,022.71
1,024,001	1,025,000	13,893.08	9,030.50
1,025,001	1,026,000	13,905.06	9,038.29
1,026,001	1,027,000	13,917.05	9,046.08
1,027,001	1,028,000	13,929.03	9,053.87
1,028,001	1,029,000	13,941.01	9,061.66
1,029,001	1,030,000	13,952.99	9,069.45
1,030,001	1,031,000	13,964.98	9,077.23
1,031,001	1,032,000	13,976.96	9,085.02
1,032,001	1,033,000	13,988.94	9,092.81
1,033,001	1,034,000	14,000.93	9,100.60
1,034,001	1,035,000	14,012.91	9,108.39
1,035,001	1,036,000	14,024.89	9,116.18
1,036,001	1,037,000	14,036.87	9,123.97
1,037,001	1,038,000	14,048.86	9,131.76
1,038,001	1,039,000	14,060.84	9,139.55
1,039,001	1,040,000	14,072.82	9,147.33
1,040,001	1,041,000	14,084.81	9,155.12
1,041,001	1,042,000	14,096.79	9,162.91

Building Permit Fees - Current			
Total Valuation		Building Permit Fee	Plan Check Fee
1,042,001	1,043,000	3,949.68	2,567.29
1,043,001	1,044,000	3,953.03	2,569.47
1,044,001	1,045,000	3,956.39	2,571.65
1,045,001	1,046,000	3,959.74	2,573.83
1,046,001	1,047,000	3,963.10	2,576.01
1,047,001	1,048,000	3,966.45	2,578.19
1,048,001	1,049,000	3,969.81	2,580.37
1,049,001	1,050,000	3,973.16	2,582.55
1,050,001	1,051,000	3,976.51	2,584.73
1,051,001	1,052,000	3,979.87	2,586.91
1,052,001	1,053,000	3,983.22	2,589.10
1,053,001	1,054,000	3,986.58	2,591.28
1,054,001	1,055,000	3,989.93	2,593.46
1,055,001	1,056,000	3,993.29	2,595.64
1,056,001	1,057,000	3,996.64	2,597.82
1,057,001	1,058,000	4,000.00	2,600.00
1,058,001	1,059,000	4,003.35	2,602.18
1,059,001	1,060,000	4,006.71	2,604.36
1,060,001	1,061,000	4,010.06	2,606.54
1,061,001	1,062,000	4,013.41	2,608.72
1,062,001	1,063,000	4,016.77	2,610.90
1,063,001	1,064,000	4,020.12	2,613.08
1,064,001	1,065,000	4,023.48	2,615.26
1,065,001	1,066,000	4,026.83	2,617.44
1,066,001	1,067,000	4,030.19	2,619.62
1,067,001	1,068,000	4,033.54	2,621.80
1,068,001	1,069,000	4,036.90	2,623.98
1,069,001	1,070,000	4,040.25	2,626.16
1,070,001	1,071,000	4,043.61	2,628.34
1,071,001	1,072,000	4,046.96	2,630.52

Building Permit Fees - Suggested			
Total Valuation		Building Permit Fee	Plan Check Fee
1,042,001	1,043,000	14,108.77	9,170.70
1,043,001	1,044,000	14,120.75	9,178.49
1,044,001	1,045,000	14,132.74	9,186.28
1,045,001	1,046,000	14,144.72	9,194.07
1,046,001	1,047,000	14,156.70	9,201.86
1,047,001	1,048,000	14,168.69	9,209.65
1,048,001	1,049,000	14,180.67	9,217.43
1,049,001	1,050,000	14,192.65	9,225.22
1,050,001	1,051,000	14,204.63	9,233.01
1,051,001	1,052,000	14,216.62	9,240.80
1,052,001	1,053,000	14,228.60	9,248.59
1,053,001	1,054,000	14,240.58	9,256.38
1,054,001	1,055,000	14,252.57	9,264.17
1,055,001	1,056,000	14,264.55	9,271.96
1,056,001	1,057,000	14,276.53	9,279.75
1,057,001	1,058,000	14,288.51	9,287.53
1,058,001	1,059,000	14,300.50	9,295.32
1,059,001	1,060,000	14,312.48	9,303.11
1,060,001	1,061,000	14,324.46	9,310.90
1,061,001	1,062,000	14,336.45	9,318.69
1,062,001	1,063,000	14,348.43	9,326.48
1,063,001	1,064,000	14,360.41	9,334.27
1,064,001	1,065,000	14,372.39	9,342.06
1,065,001	1,066,000	14,384.38	9,349.84
1,066,001	1,067,000	14,396.36	9,357.63
1,067,001	1,068,000	14,408.34	9,365.42
1,068,001	1,069,000	14,420.33	9,373.21
1,069,001	1,070,000	14,432.31	9,381.00
1,070,001	1,071,000	14,444.29	9,388.79
1,071,001	1,072,000	14,456.27	9,396.58

TOTAL VALUATION \$500,001 to \$1,000,000	<p>For every \$1,000 increase in the valuation the Building Permit increases by \$3.99 and the Plan Check Fee increases by \$2.59 up to \$500,000. For valuation above \$500,000 please see the formulas below;</p> <p style="text-align: center;">BUILDING PERMIT</p> <p>\$2,128.16 for the first \$500,000 plus \$3.35 for each additional \$1,000.00 or fraction thereof to and including \$1,000,000.00</p>
\$1,000,001 and up	<p>\$3,805.43 for the first \$1,000,000 plus \$2.20 for each additional \$1,000.00 or fraction thereof to and including \$1,000,000.00</p> <p style="text-align: center;">Plan Check Fee is 65% x Building Permit Fees</p>
2.90% increase based on CPI increase	

TOTAL VALUATION \$1,000,001 and up	<p style="text-align: center;">BUILDING PERMIT</p> <p>\$13593.5 for the first \$1,000,000 plus \$11.98 for each additional \$1,000.00 or fraction thereof to and including \$1,000,000</p> <p style="text-align: center;">Plan Check Fee is 65% x Building Permit Fees</p>
--	---

PLANNING FEES

#	Description	Current Fee/Charge	Unit	Notes
1	Preliminary Plan Review	\$250.00		
2	Site Plan Review	\$1,800.00		
3	Variance Review	\$2,000.00		
4	Conditional Use Review	\$2,000.00		
5	Home Occupation Permit	\$150.00		
6	Sign Review	\$150.00		
7	Zoning Text Amendment Request	\$3,500.00		
8	Zone Change	\$3,900.00		
9	General Plan Amendment	\$3,900.00		
10	Planned Unit Development	\$2,400.00		
11	Lot Line Adjustment	\$1,800.00	Deposit	
12	Tentative Parcel Map	\$3,800.00	Deposit	
13	Tentative Subdivision Map	\$5,700.00	Deposit	
14	Final Parcel Map Check	\$1,600.00	Deposit	
15	Subdivision Map Check	\$3,300.00	Deposit	
16	Annexation Processing	\$1,360.00	Deposit	
17	Development Extension Review	\$110.00		
18	Planning Appeal Processing	\$170.00		
19	Environmental Impact Review - Deposit	\$530.00	Deposit	
20	Grading Plan Check	\$400.00	Deposit	
21	Grading Inspection	\$100.00		Minimum Fee - 1-4 residential units
28	Compliance Review	\$80.00		
29	R.O.W. Encroachment Plan Check/Review	\$100.00		
30	Zoning Code Enforcement			
31	Infraction	\$100.00		
32	Misdemeanor	\$340.00		
33	New Fees Added			
34	General Plan Update Fee	New	% of Building Permit Fee	
35	Conditional Use Permit (CUP) Amendment	New		
36	Development Agreement	New		
37	Environmental-Categorical Exemption	New		
38	Environmental-Negative Declaration or Mitigated ND	New		
39	Extension Request	New		
40	Will Serve Analysis Fee	New		

Full Cost	Subsidy %	Suggested Fee	Fee Δ
\$1,004.71	0%	\$1,004.00	\$754
\$2,906.94	0%	\$2,906.00	\$1,106
\$2,425.88	0%	\$2,425.00	\$425
\$2,425.88	0%	\$2,425.00	\$425
\$117.27	0%	\$117.00	-\$33
\$155.59	0%	\$155.00	\$5
\$4,549.90	0%	\$4,549.00	\$1,049
\$5,331.93	0%	\$5,331.00	\$1,431
\$5,331.93	0%	\$5,331.00	\$1,431
\$3,001.70	0%	\$3,001.00	\$601
\$2,835.15	0%	\$2,835.00	\$1,035
\$5,239.84	0%	\$5,239.00	\$1,439
\$8,148.65	0%	\$8,148.00	\$2,448
\$2,658.91	0%	\$2,658.00	\$1,058
\$4,247.91	0%	\$4,247.00	\$947
\$6,192.44	0%	\$6,192.00	\$4,832
\$217.19	0%	\$217.00	\$107
\$769.50	0%	\$769.00	\$599
\$2,597.03	0%	\$2,597.00	\$2,067
\$726.59	0%	\$726.00	\$326
\$193.73	0%	\$193.00	\$93
\$117.27	0%	\$117.00	\$37
\$105.54	1%	\$105.00	\$5
\$203.25	0%	\$203.00	\$103
\$414.24	0%	\$414.00	\$74
13%	40%	8%	NA
\$1,794.88	0%	\$1,794.00	NA
\$8,338.36	0%	\$8,338.00	NA
\$408.80	0%	\$408.00	NA
\$6,226.53	0%	\$6,226.00	NA
\$941.94	0%	\$941.00	NA
Variable	NA	\$5,000 Deposit	NA

PLANNING FEES

#	Description	Current Fee/Charge	Unit	Notes
41	Special Event Permit			
42	Category I; Temporary Signs, Grand Opening Banners/ Balloons	\$30.00		
43	Category II; Temporary Uses of 3 days or Less (Valentine's Day flower sales, firework sales)	\$50.00		
44	Category III; Events with less than 100 attendees	\$85.00		
45	Category IV; Events with 100-499 attendees	\$125.00		
46	Category V; Events with greater than 500 attendees; Events involving the sale of alcohol.	\$175.00		
47	Low Impact Road Closure	\$100.00		
48	High Impact Road Closure	\$250.00		
49	Mobile Vending Permit	\$150.00		
50	Sidewalk Vending Permit	New		
51	Engineering Development/Public Improvement Plan Check and Inspection, percent by value	New		Charge 4% of project valuation

Full Cost	Subsidy %	Suggested Fee	Fee Δ
\$251.89	1%	\$250.00	\$220
\$356.04	2%	\$350.00	\$300
\$457.65	2%	\$450.00	\$365
Variable	NA	\$800 Deposit	NA
Variable	NA	\$1,500 Deposit	NA
\$351.76	0%	\$351.00	\$251
\$686.18	0%	\$686.00	\$436
\$370.45	0%	\$370.00	\$220
\$370.45	0%	\$370.00	NA
NA	NA	4.00%	NA

PUBLIC SAFETY FEES

#	Description	Current Fee/Charge	Unit	Authority
1	Manual Fingerprints	\$25.00		Council
2	Live Scan Fingerprints	\$25.00		Council
3	Records Check/Clearance Letter	\$20.00		Council
4	Vehicle Equipment Correction- Our Cite	\$20.00		Council
5	Vehicle Equipment Correction- Other Agency's Cite	\$20.00		Council
6	VIN Verification	\$20.00		Council
7	Crime Report	\$1.00	per page	6253(b)GC
8	Crime Report- DV Victim Copy	N/C		6228 FC
9	Fire Report	\$1.00	per page	Council
10	Photos/CD	\$20.00	All Digital Media	6253(b)GC
11	Traffic Accident Report	\$25.00		20012 VC
12	General Duplication (8.5"x11" STD)	.10 per page		6253(b)GC
13	Vehicle Release	\$125.00		Council
14	Animal Surrender (Self-Transport)	\$50 per animal/ \$100 per litter		Council
15	Animal Surrender (Officer Transport)	\$75 per animal/ \$125 per litter		Council
16	LMC Violations (1st Offense)	\$100.00		1.16.010 LMC
17	LMC Violations (2nd Offense)	\$500.00		1.16.010 LMC
18	LMC Violations (3rd & Subsequent Offense)	\$1,000.00		1.16.010 LMC
19	LMC Violations- Parking (Street, Etc.)	\$50.00		14.03.160 LMC
20	Second Violation	\$100.00		14.03.160 LMC
21	Third Violation	\$250.00		14.03.160 LMC
22	LMC Violations- Parking (City Property) 1st offense	\$50.00		10.04.190 LMC
23	LMC Violations- Parking (City Property) 2nd offense	\$100.00		10.04.190 LMC
24	LMC Violations- Parking (City Property) 3rd & subsequent offense	\$250.00		10.04.190 LMC
25	LMC Violation- Handicapped Parking	\$250.00		10.04.120(M) LMC
26	Administrative Citation (Misdemeanor)	\$1,000.00		1.18.040(A) LMC
27	Administrative Citation (Infraction, 1st Offense)	\$100.00		1.18.040(B)(1) LMC
28	Administrative Citation (2nd Offense)	\$200.00		1.18.040(B)(2) LMC
29	Administrative Citation (3rd and subsequent)	\$500.00		1.18.040(B)(3) LMC
30	Fireworks Citation (First Offense)	\$1,000.00		53069.4GC, 12557 HS
31	Fireworks Citation (Second Offense)	\$2,000.00		53069.4GC, 12557 HS
32	Fireworks Citation (Third & Subsequent Offense)	\$3,000.00		53069.4GC, 12557 HS
33	Statutory Registrants	\$25.00		Council
34	False Alarm Response (1st & 2nd Response Calendar Year)	FREE		Council
35	False Alarm Response (3rd Response Calendar Year)	FREE		Council
36	False Alarm Response (4th Response Calendar Year)	\$50.00		Council
37	False Alarm Response (5th Response Calendar Year)	\$100.00		Council

Full Cost	Subsidy %	Suggested Fee	Fee Δ
\$32.30	1%	\$32.00	\$7
\$32.30	1%	\$32.00	\$7
\$19.06	0%	\$19.00	-\$1
\$40.79	2%	\$40.00	\$20
\$40.79	2%	\$40.00	\$20
\$48.94	2%	\$48.00	\$28
\$12.70	92%	\$1.00 per page	\$0
NA	NA	N/C	\$0
\$6.35	84%	\$1 per page	\$0
\$18.38	2%	\$18.00	-\$2
\$37.18	0%	\$37.00	\$12
\$0.25	60%	.10 per page	\$0
\$221.19	0%	\$221.00	\$96
\$64.47	1%	\$64.00	\$14/-\$36
\$113.42	0%	\$113.00	\$38/-\$12
NA	NA	\$100.00	\$0
NA	NA	\$500.00	\$0
NA	NA	\$1,000.00	\$0
NA	NA	\$50.00	\$0
NA	NA	\$100.00	\$0
NA	NA	\$250.00	\$0
NA	NA	\$50.00	\$0
NA	NA	\$100.00	\$0
NA	NA	\$250.00	\$0
NA	NA	\$250.00	\$0
NA	NA	\$1,000.00	\$0
NA	NA	\$2,000.00	\$0
NA	NA	\$3,000.00	\$0
\$32.30	1%	\$32.00	\$7
NA	NA	FREE	\$0
NA	NA	FREE	\$0
NA	NA	\$50.00	\$0
NA	NA	\$100.00	\$0

PUBLIC SAFETY FEES

#	Description	Current Fee/Charge	Unit	Authority
38	False Alarm Response (6th & Subsequent Response Calendar Year)	\$250.00		Council
39	Booking Fees	Pass Through Costs		29550.1GC
40	Emergency Response Fee	Actual Costs		53150 et Seq.
41	DUI Response Fees	Actual Costs		10.09.010 et. Seq., 53150 GC et Seq.
42	Fire Engine Hours	\$81.10		FEMA Rates
43	Fire Truck Hours	\$140.00		FEMA Rates
44	Brush Truck Hours	\$126.50		FEMA Rates
45	Water	Utility Cost		Utility Cost
46	Police Vehicle	\$16.05		FEMA Rates
47	Staff Time	Actual Cost		Council

Full Cost	Subsidy %	Suggested Fee	Fee Δ
NA	NA	\$250.00	\$0
NA	NA	Pass Through Costs	\$0
NA	NA	Actual Costs	\$0
NA	NA	Actual Costs	\$0
NA	NA	per FEMA rates	NA
NA	NA	per FEMA rates	NA
NA	NA	per FEMA rates	NA
NA	NA	Utility Cost	\$0
NA	NA	per FEMA rates	NA
NA	NA	Actual Cost	\$0

PARKS & REC FEES

#	Description	Current Fee/Charge	Unit	Notes
1	PARK RESERVATIONS			
2	Arbor Size			
3	8x10	\$50.00	plus \$75 Deposit	
4	10x10	\$50.00	plus \$75 Deposit	
5	20x40	\$70.00	plus \$100 Deposit	
6	Stage	\$50.00	plus \$75 Deposit	
7	Bounce House(s)	\$25.00	per Bounce House	
8	SWEET BRIER PLAZA RENTAL FEE			
9	Stage			
10	2 hours minimum rental	\$65.00	HR	
11	Market from 4 pm to 10 pm (6 hours)	\$50.00	HR	
12	Arbor			
13	2 hours minimum rental	\$150.00	HR	
14	Market from 4 pm to 10 pm (6 hours)	\$100.00	HR	
15	SENIOR CENTER RENTAL FEE			
16	Individual/Private Party	\$250.00	plus \$250 Deposit	Individual or a private party conducting a private activity is \$250.00 with a \$250.00 deposit paid at the time of reservation. Deposit will be returned within three working days of the event following a favorable facility inspection. The capacity of the space is 111 persons.
17	SKATE PARK RENTAL FEE			
18	Individual/Private Party	New	per hour plus \$250 Deposit	
19	WELLNESS & AQUATIC CENTER			
20	Facility Hour Rental			*Allow extra hour for set-up/clean up (Add extra hourly rate)
21	Great Room	\$100.00	per hour	
22	Facility All Day Rental (12 Hours Only)			Anything after midnight is an extra \$45 per hour
23	Security	\$30.00	per hour/3 hr minimum per security guard	
24	Projectors	\$50.00	extra	
25	Pool Rental			Rental includes: Tables and Chairs up to 75 people with minimum of 3 hours Saturday parties will have to be after 4:30 PM (Between June 13 & August 15) Sunday parties will be either (11:00 AM to 3:00 PM) or (4:00 PM till rental time)
26	Swim Teams & Meets	\$20.00	per hour	
27	0-25 Guests	\$100.00	per hour	
28	51-75 Guests	\$150.00	per hour	

Direct Staff Cost	Suggested Fee	Fee Δ
\$57.97	\$57.00	\$7
\$76.26	\$76.00	\$26
\$94.55	\$94.00	\$24
\$112.84	\$112.00	\$62
\$76.26	\$76.00	\$51
\$76.26	\$76.00	\$11
\$76.26	\$76.00	\$26
\$112.84	\$112.00	-\$38
\$112.84	\$112.00	\$12
\$332.30	\$330.00	\$80
NA	\$159.00	NA
\$159.74	\$159.00	\$59
NA	Actual Cost plus 10% Admin	NA
\$71.70	\$70.00	\$20
\$28.68	\$28.00	\$8
\$143.39	\$143.00	\$43
\$215.09	\$215.00	\$65

PARKS & REC FEES

#	Description	Current Fee/Charge	Unit	Notes
29	101-125 Guests	\$200.00	per hour	
30	151-175 Guests	\$250.00	per hour	
31	26-50 Guests	\$125.00	per hour	
32	76-100 Guests	\$175.00	per hour	
33	126-150 Guests	\$225.00	per hour	
34	175-200 Guests	\$275.00	per hour	
35	200-300 Guests	\$300.00	per hour	
36	Deposit			Anything after midnight is an extra \$45 per hour
37	Deposit	New		
38	Swim Lessons			
39	Group 8 days lesson	\$45.00	Per Session	
40	Advertising & Sponsorship Agreement			
41	Package 1	New	per month	
42	Package 2	New	per month	
43	Customized Banner Option: Package 1	New		
44	Customized Banner Option: Package 2	New		
45	Membership			
46	1 Year Contract	\$20.00	Per Month	
47	Month 2 Month	\$30.00	Per Month	
48	1 Year Medicare	\$15.00	Per Month	
49	M 2 M Medicare	\$25.00	Per Month	
50	3 Month Swim	\$55.00	Fee	
51	Day Pass	\$5.00	Fee	
52	Enrollment Fee	\$25.00	Fee	*City Manager will at times reduce member fees or enrollment fee based on marketing promotions
53	Early Cancellation Fee - if less than 1 year	New		No cancellation fee if greater than 1 year.
54	COL Employee	\$10.00	Per Month	*Deducted from payroll
55	SPORTS COMPLEX			
56	Soccer Field	\$15.00	per field & per game	
57	Baseball Fields	\$30.00	per field & per game	
58	Softball Fields	\$30.00	per field & per game	
59	Volleyball Courts	New	per field & per game	
60	Light towers	\$48.00	per tower	

Direct Staff Cost	Suggested Fee	Fee Δ
\$286.79	\$286.00	\$86
\$358.48	\$358.00	\$108
\$179.24	\$179.00	\$54
\$250.94	\$250.00	\$75
\$322.63	\$322.00	\$97
\$394.33	\$394.00	\$119
\$430.18	\$430.00	\$130
NA	\$100.00	NA
\$64.53	\$64.00	\$19
NA	\$75.00	NA
NA	\$150.00	NA
NA	\$75.00	NA
NA	\$125.00	NA
NA	\$23.00	\$3
NA	\$30.00	\$0
NA	\$20.00	\$5
NA	\$25.00	\$0
NA	\$55.00	\$0
NA	\$5.00	\$0
\$39.27	\$39.00	\$14
NA	\$23.00	NA
\$13.40	\$13.00	\$3
NA	\$30.00	\$15
NA	\$50.00	\$20
NA	\$40.00	\$10
NA	\$10.00	NA
NA	\$48.00	\$0



27368 Via Industria, Suite 200
Temecula, CA 92590
800.755.6864 | Fax: 888.326.6864
951.587.3500 | Fax: 951.587.3510

www.willdan.com